

TECHNICAL INFORMATION



Logo marking:



MECH



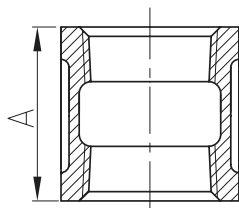
#150 BLACK & GALVANIZED MALLEABLE IRON PIPE FITTINGS



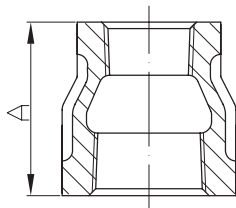


Materials: ASTM A197 / A197M
 Dimensions: Fittings ASME B16.3, B16.14
 Unions B16.39
 Threads: ASME B1.20.1 - NPT

Logo marking:



COUPLINGS				
BLACK	GALV.	SIZE	A (inch)	Lb
35001	36001	1/8	0.95	0.05
35002	36002	1/4	1.06	0.08
35003	36003	3/8	1.16	0.12
35004	36004	1/2	1.34	0.18
35005	36005	3/4	1.52	0.28
35006	36006	1	1.67	0.43
35007	36007	1 1/4	1.93	0.65
35008	36008	1 1/2	2.15	0.85
35009	36009	2	2.53	1.39
35010	36010	2 1/2	2.88	2.35
35011	36011	3	3.18	3.37
35012	36012	4	3.69	5.60
35013	-	5	3.74	8.40
35014	36014	6	4.13	11.82

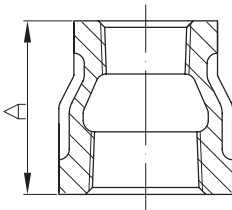


REDUCING COUPLINGS				
BLACK	GALV.	SIZE	A (inch)	Lb
35015	36015	1/4 x 1/8	1.00	0.07
35016	36016	3/8 x 1/4	1.13	0.11
35017	36017	3/8 x 1/8	1.13	0.11
35019	36019	1/2 x 3/8	1.25	0.15
35020	36020	1/2 x 1/4	1.25	0.13
35021	36021	1/2 x 1/8	1.25	0.15
35023	36023	3/4 x 1/2	1.44	0.24
35024	36024	3/4 x 3/8	1.44	0.22
35025	36025	3/4 x 1/4	1.44	0.20
35026	36026	3/4 x 1/8	1.44	0.18
35027	36027	1 x 3/4	1.69	0.39
35028	36028	1 x 1/2	1.69	0.35
35029	36029	1 x 3/8	1.69	0.30
35030	36030	1 x 1/4	1.69	0.29
35031	36031	1 1/4 x 1	2.06	0.59
35032	36032	1 1/4 x 3/4	2.06	0.54
35033	36033	1 1/4 x 1/2	2.06	0.49
35034	36034	1 1/4 x 3/8	2.06	0.50
35063	-	1 1/4 x 1/4	2.06	0.49
35035	36035	1 1/2 x 1 1/4	2.31	0.82
35036	36036	1 1/2 x 1	2.31	0.75
35037	36037	1 1/2 x 3/4	2.31	0.68
35038	36038	1 1/2 x 1/2	2.31	0.61
35039	-	1 1/2 x 3/8	2.31	0.64
35080	-	1 1/2 x 1/4	2.31	0.64
35040	36040	2 x 1 1/2	2.81	1.24
35041	36041	2 x 1 1/4	2.81	1.13
35042	36042	2 x 1	2.81	1.03
35043	36043	2 x 3/4	2.81	0.97
35044	36044	2 x 1/2	2.81	1.00
35045	-	2 x 3/8	2.81	0.95

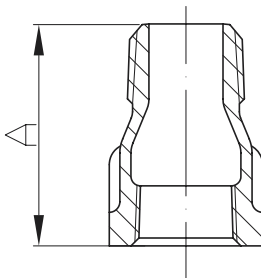


Materials: ASTM A197 / A197M
 Dimensions: Fittings ASME B16.3, B16.14
 Unions B16.39
 Threads: ASME B1.20.1 - NPT

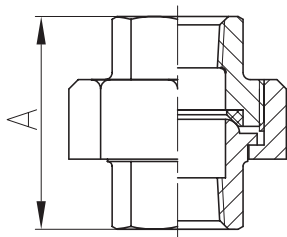
Logo marking:



...REDUCING COUPLINGS				
BLACK	GALV.	SIZE	A (inch)	Lb
35046	36046	2 1/2 x 2	3.25	2.12
35047	36047	2 1/2 x 1 1/2	3.25	1.91
35048	36048	2 1/2 x 1 1/4	3.25	1.82
35049	36049	2 1/2 x 1	3.25	1.77
35050	-	2 1/2 x 3/4	3.25	1.65
35083	-	2 1/2 x 1/2	3.25	1.63
35051	36051	3 x 2 1/2	3.69	3.16
35052	36052	3 x 2	3.69	2.78
35053	36053	3 x 1 1/2	3.69	2.71
35054	36054	3 x 1 1/4	3.69	2.56
35055	36055	3 x 1	3.69	2.49
35056	36056	4 x 3	4.38	5.46
35057	36057	4 x 2 1/2	4.38	4.83
35058	36058	4 x 2	4.38	4.35
35059	36059	4 x 1 1/2	4.38	4.22
35060	36060	4 x 1 1/4	4.38	4.15
35070	-	6 x 4	4.13	10.04



EXTENSION PIECES				
BLACK	GALV.	SIZE	A (inch)	Lb
35084	36084	1/2	1.69	0.12
-	36085	3/4	1.89	0.23

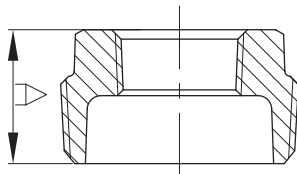
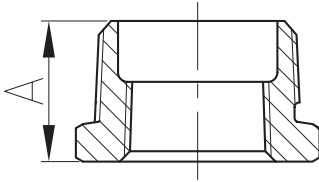


UNIONS (BRASS TO IRON)				
BLACK	GALV.	SIZE	A (inch)	Lb
35101	36101	1/8	1.26	0.16
35102	36102	1/4	1.44	0.22
35103	36103	3/8	1.61	0.32
35104	36104	1/2	1.71	0.38
35105	36105	3/4	1.95	0.56
35106	36106	1	2.07	0.81
35107	36107	1 1/4	2.26	1.14
35108	36108	1 1/2	2.40	1.66
35109	36109	2	2.76	2.08
35110	36110	2 1/2	3.23	3.64
35111	36111	3	3.50	4.55
35112	36112	4	3.86	8.18



Materials: ASTM A197 / A197M
 Dimensions: Fittings ASME B16.3, B16.14
 Unions B16.39
 Threads: ASME B1.20.1 - NPT

Logo marking:

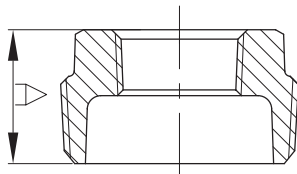
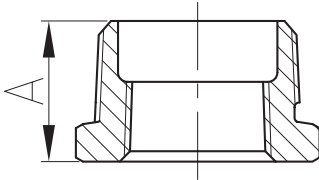


M x F HEX. BUSHINGS				
BLACK	GALV.	SIZE	A (inch)	Lb
35115	36115	1/4 x 1/8	0.58	0.03
35116	36116	3/8 x 1/4	0.64	0.04
35117	36117	3/8 x 1/8	0.64	0.11
35119	36119	1/2 x 3/8	0.75	0.06
35120	36120	1/2 x 1/4	0.75	0.08
35121	36121	1/2 x 1/8	0.75	0.09
35123	36123	3/4 x 1/2	0.85	0.11
35124	36124	3/4 x 3/8	0.85	0.13
35125	36125	3/4 x 1/4	0.85	0.14
35126	36126	3/4 x 1/8	0.85	0.15
35127	36127	1 x 3/4	1.00	0.18
35128	36128	1 x 1/2	1.00	0.22
*	35129	1 x 3/8	1.00	0.20
*	35130	1 x 1/4	1.00	0.21
*	35131	-	1 x 1/8	0.21
	35132	36132	1 1/4 x 1	0.28
	35133	36133	1 1/4 x 3/4	0.37
*	35134	36134	1 1/4 x 1/2	0.32
*	35169	36169	1 1/4 x 3/8	0.29
*	35170	36170	1 1/4 x 1/4	0.31
	35136	36136	1 1/2 x 1 1/4	0.31
	35137	36137	1 1/2 x 1	0.45
*	35138	36138	1 1/2 x 3/4	0.43
*	35139	36139	1 1/2 x 1/2	0.39
*	35179	36179	1 1/2 x 3/8	0.35
*	35180	36180	1 1/2 x 1/4	0.37
*	35181	36181	1 1/2 x 1/8	0.37
	35140	36140	2 x 1 1/2	0.61
	35141	36141	2 x 1 1/4	0.74
*	35142	36142	2 x 1	0.62
*	35143	36143	2 x 3/4	0.59
*	35144	36144	2 x 1/2	0.52
*	35145	36145	2 x 3/8	0.53
	35182	36182	2 x 1/4	0.55
	35146	36146	2 1/2 x 2	1.10
	35147	36147	2 1/2 x 1 1/2	1.14
*	35148	36148	2 1/2 x 1 1/4	1.04
*	35149	36149	2 1/2 x 1	1.04
*	35150	36150	2 1/2 x 3/4	0.99
*	35191	36191	2 1/2 x 1/2	0.91
	35151	36151	3 x 2 1/2	1.82
	35152	36152	3 x 2	1.89
*	35153	36153	3 x 1 1/2	1.63
*	35154	36154	3 x 1 1/4	1.53
*	35155	36155	3 x 1	1.42
*	35171	-	3 x 3/4	1.47
*	35172	-	3 x 1/2	1.33

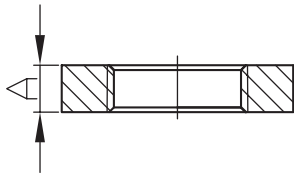


Materials: ASTM A197 / A197M
 Dimensions: Fittings ASME B16.3, B16.14
 Unions B16.39
 Threads: ASME B1.20.1 - NPT

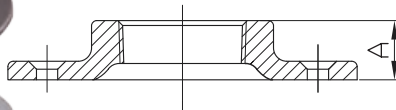
Logo marking:



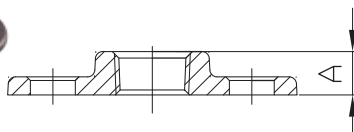
...M x F HEX. BUSHINGS				
BLACK	GALV.	SIZE	A (inch)	Lb
35193	36193	3 1/2 x 3	1.63	1.98
35194	-	3 1/2 x 2 1/2	1.63	2.01
35195	36195	3 1/2 x 2	1.63	2.20
* 35196	36196	3 1/2 x 1 1/2	1.63	2.20
35198	-	3 1/2 x 1	1.63	2.09
35156	36156	4 x 3	1.72	2.81
* 35157	36157	4 x 2 1/2	1.82	2.98
* 35158	36158	4 x 2	1.82	2.60
* 35159	36159	4 x 1 1/2	1.82	2.57
* 35160	36160	4 x 1 1/4	1.82	2.75
35161	36161	4 x 1	1.82	2.60
35197	-	5 x 4	1.81	4.45
35167	36164	6 x 5	2.03	7.21
35165	36165	6 x 4	2.15	6.80
35166	36166	6 x 3	2.15	6.16
* 35162	-	6 x 2 1/2	2.15	6.16
* 35168	36168	6 x 2	2.15	7.01



LOCKNUTS				
BLACK	GALV.	SIZE	A (inch)	Lb
35632	36632	1/8	0.19	0.04
35633	36633	1/4	0.25	0.04
35634	36634	3/8	0.28	0.06
35635	36635	1/2	0.31	0.08
35636	36636	3/4	0.34	0.14
35637	36637	1	0.38	0.20
35638	36638	1 1/4	0.42	0.26
35639	36639	1 1/2	0.47	0.41
35651	36651	2	0.53	0.04



FLOOR FLANGES				
BLACK	GALV.	SIZE	A (inch)	Lb
-	36702	1/4	0.47	0.33
35703	36703	3/8	0.55	0.60
35704	36704	1/2	0.55	0.35
35705	36705	3/4	0.63	0.49
35706	36706	1	0.67	0.64
35707	36707	1 1/4	0.75	0.83
35708	36708	1 1/2	0.87	1.12
35709	36709	2	0.98	1.55

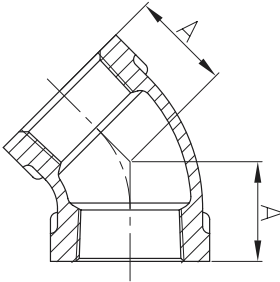


WASTE NUT				
BLACK	GALV.	SIZE	A (inch)	Lb
-	36804	1/2	0.47	0.11
-	36805	3/4	0.51	0.13

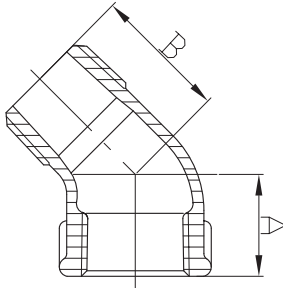


Materials: ASTM A197 / A197M
 Dimensions: Fittings ASME B16.3, B16.14
 Unions B16.39
 Threads: ASME B1.20.1 - NPT

Logo marking:



45° ELBOWS				
BLACK	GALV.	SIZE	A (inch)	Lb
35201	36201	1/8	0.63	0.07
35202	36202	1/4	0.73	0.11
35203	36203	3/8	0.80	0.16
35204	36204	1/2	0.88	0.20
35205	36205	3/4	0.98	0.33
35206	36206	1	1.12	0.52
35207	36207	1 1/4	1.29	0.78
35208	36208	1 1/2	1.43	1.01
35209	36209	2	1.68	1.64
35210	36210	2 1/2	1.95	2.93
35211	36211	3	2.17	4.17
35215	36215	3 1/2	2.39	4.98
35212	36212	4	2.61	7.02
35213	-	5	3.05	13.23
35214	36214	6	3.46	16.50

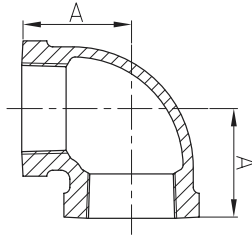


(M x F) STREET 45° ELBOWS					
BLACK	GALV.	SIZE	A (inch)	B (inch)	Lb
35271	36271	1/8	0.63	0.83	0.05
35272	36272	1/4	0.73	0.94	0.13
35273	36273	3/8	0.80	1.03	0.13
35274	36274	1/2	0.88	1.15	0.17
35275	36275	3/4	0.98	1.29	0.28
35276	36276	1	1.12	1.47	0.45
35277	36277	1 1/4	1.29	1.71	0.71
35278	36278	1 1/2	1.43	1.88	0.91
35279	36279	2	1.68	2.22	1.51
35280	-	2 1/2	1.95	2.57	2.63
35281	36281	3	2.17	3.00	3.91
35283	36283	4	2.61	3.70	6.96

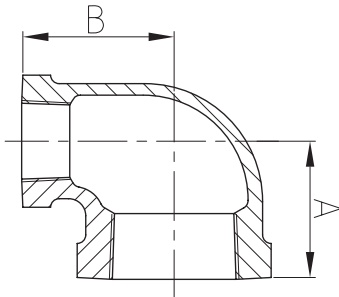


Materials: ASTM A197 / A197M
 Dimensions: Fittings ASME B16.3, B16.14
 Unions B16.39
 Threads: ASME B1.20.1 - NPT

Logo marking:



90° ELBOWS				
BLACK	GALV.	SIZE	A (inch)	Lb
35301	36301	1/8	0.69	0.09
35302	36302	1/4	0.81	0.10
35303	36303	3/8	0.95	0.15
35304	36304	1/2	1.12	0.22
35305	36305	3/4	1.31	0.36
35306	36306	1	1.50	0.57
35307	36307	1 1/4	1.75	0.90
35308	36308	1 1/2	1.94	1.24
35309	36309	2	2.25	1.86
35310	36310	2 1/2	2.70	3.37
35311	36311	3	3.08	5.22
-	36300	3 1/2	3.44	7.25
35312	36312	4	3.79	8.88
35313	36313	5	4.50	14.05
35314	36314	6	5.13	20.70

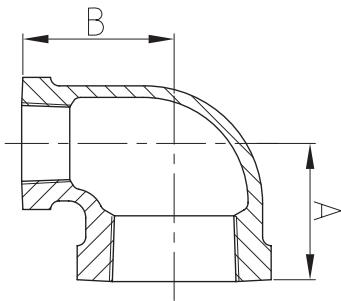


REDUCING 90° ELBOWS					
BLACK	GALV.	SIZE	A (inch)	B (inch)	Lb
35315	36315	1/4 x 1/8	0.74	0.76	0.10
35316	36316	3/8 x 1/4	0.88	0.90	0.13
35317	-	3/8 x 1/8	0.81	0.85	0.11
35319	36319	1/2 x 3/8	1.04	1.03	0.18
35320	36320	1/2 x 1/4	0.97	0.98	0.16
35321	36321	1/2 x 1/8	0.87	0.91	0.14
35323	36323	3/4 x 1/2	1.20	1.22	0.31
35324	36324	3/4 x 3/8	1.12	1.13	0.26
35325	36325	3/4 x 1/4	1.05	1.08	0.22
35326	36326	3/4 x 1/8	1.02	1.06	0.21
35327	36327	1 x 3/4	1.37	1.45	0.49
35328	36328	1 x 1/2	1.26	1.40	0.41
35329	36329	1 x 3/8	1.18	1.27	0.36
35330	-	1 x 1/4	1.06	1.22	0.33
35331	36331	1 1/4 x 1	1.58	1.67	0.76
35332	36332	1 1/4 x 3/4	1.45	1.62	0.65
35333	36333	1 1/4 x 1/2	1.34	1.53	0.56
35335	36335	1 1/2 x 1 1/4	1.82	1.88	1.03
35336	36336	1 1/2 x 1	1.65	1.80	0.90
35337	36337	1 1/2 x 3/4	1.52	1.75	0.75
35338	36338	1 1/2 x 1/2	1.38	1.63	0.65
35340	36340	2 x 1 1/2	2.02	2.16	1.56
35341	36341	2 x 1 1/4	1.90	2.10	1.36
35342	36342	2 x 1	1.73	2.02	1.25
35343	36343	2 x 3/4	1.60	1.97	1.07
35344	36344	2 x 1/2	1.48	1.87	0.95

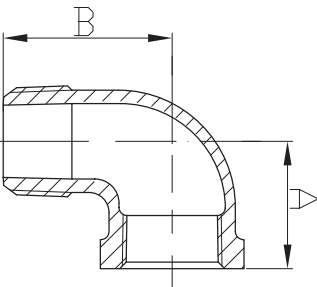


Materials: ASTM A197 / A197M
 Dimensions: Fittings ASME B16.3, B16.14
 Unions B16.39
 Threads: ASME B1.20.1 - NPT

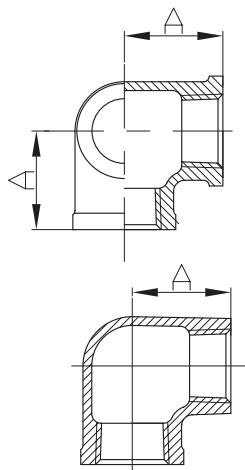
Logo marking:



...REDUCING 90° ELBOWS					
BLACK	GALV.	SIZE	A (inch)	B (inch)	Lb
35346	36346	2 1/2 x 2	2.39	2.60	2.53
35347	36347	2 1/2 x 1 1/2	2.16	2.51	2.21
35348	-	2 1/2 x 1 1/4	1.99	2.36	2.10
35349	-	2 1/2 x 1	1.81	2.31	1.88
35350	-	2 1/2 x 3/4	1.65	2.24	1.76
35370	-	2 1/2 x 1/2	1.61	2.24	1.55
35351	36351	3 x 2 1/2	2.83	2.99	4.12
35352	36352	3 x 2	2.52	2.89	3.45
35353	36353	3 x 1 1/2	2.28	2.83	3.02
35356	-	4 x 3	3.30	3.60	5.11
35359	-	4 x 2 1/2	3.07	3.54	5.80
35358	-	4 x 2	2.72	3.43	5.03



(M x F) STREET 90° ELBOWS					
BLACK	GALV.	SIZE	A (inch)	B (inch)	Lb
35371	36371	1/8	0.69	1.00	0.05
35372	36372	1/4	0.81	1.19	0.10
35373	36373	3/8	0.95	1.44	0.15
35374	36374	1/2	1.12	1.62	0.21
35375	36375	3/4	1.31	1.89	0.35
35376	36376	1	1.50	2.14	0.54
35377	36377	1 1/4	1.75	2.45	0.81
35378	36378	1 1/2	1.94	2.69	1.18
35379	36379	2	2.25	3.26	1.84
35380	36380	2 1/2	2.70	3.86	3.27
35381	36381	3	3.08	4.51	4.91
35382	36382	4	3.79	5.69	9.21
-	36384	6	5.13	8.03	20.70

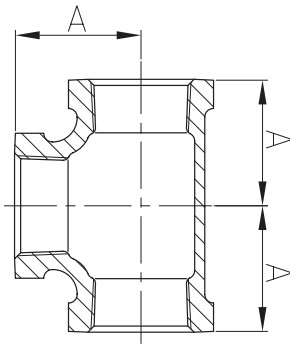


90° LATERAL SIDE OUTLET ELBOWS				
BLACK	GALV.	SIZE	A (inch)	Lb
-	36394	1/2	1.10	0.24
-	36395	3/4	1.30	0.46
-	36396	1	1.50	0.57
-	36397	1 1/4	1.77	0.90
-	36398	1 1/2	1.97	1.24
-	36399	2	2.28	1.86

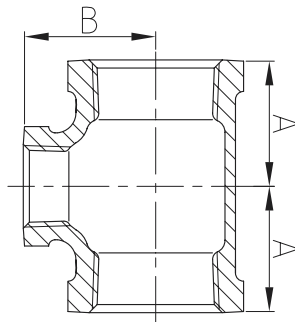


Materials: ASTM A197 / A197M
 Dimensions: Fittings ASME B16.3, B16.14
 Unions B16.39
 Threads: ASME B1.20.1 - NPT

Logo marking:



TEES				
BLACK	GALV.	SIZE	A (inch)	Lb
35401	36401	1/8	0.69	0.09
35402	36402	1/4	0.81	0.15
35403	36403	3/8	0.95	0.21
35404	36404	1/2	1.12	0.32
35405	36405	3/4	1.31	0.52
35406	36406	1	1.50	0.83
35407	36407	1 1/4	1.75	1.22
35408	36408	1 1/2	1.94	1.68
35409	36409	2	2.25	2.45
35410	36410	2 1/2	2.70	4.51
35411	36411	3	3.08	6.54
-	36415	3 1/2	3.44	9.42
35412	36412	4	3.79	11.36
35413	36413	5	4.50	18.14
35414	36414	6	5.13	27.06

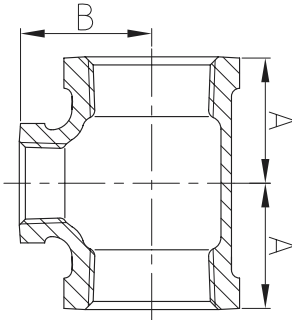


REDUCING TEES (ON BRANCH)					
BLACK	GALV.	SIZE	A (inch)	B (inch)	Lb
35523	-	1/4 x 1/4 x 1/8	0.74	0.76	0.10
35417	36417	3/8 x 3/8 x 1/4	0.88	0.90	0.19
35421	36421	1/2 x 1/2 x 3/8	1.04	1.03	0.28
35422	36422	1/2 x 1/2 x 1/4	0.97	0.98	0.24
35423	-	1/2 x 1/2 x 1/8	0.87	0.91	0.24
35429	36429	3/4 x 3/4 x 1/2	1.20	1.22	0.45
35434	36434	3/4 x 3/4 x 3/8	1.12	1.13	0.40
35428	36428	3/4 x 3/4 x 1/4	1.05	0.97	0.36
35438	36438	1 x 1 x 3/4	1.37	1.45	0.69
35440	36440	1 x 1 x 1/2	1.26	1.40	0.64
35439	36439	1 x 1 x 3/8	1.18	1.27	0.59
35441	36441	1 x 1 x 1/4	1.11	1.22	0.55
35453	36453	1 1/4 x 1 1/4 x 1	1.58	1.67	1.06
35454	36454	1 1/4 x 1 1/4 x 3/4	1.52	1.66	0.95
35455	36455	1 1/4 x 1 1/4 x 1/2	1.34	1.53	0.88
35527	-	1 1/4 x 1 1/4 x 3/8	1.26	1.44	0.79
35471	36471	1 1/2 x 1 1/2 x 1 1/4	1.82	1.88	1.44
35472	36472	1 1/2 x 1 1/2 x 1	1.65	1.80	1.32
35473	36473	1 1/2 x 1 1/2 x 3/4	1.52	1.75	1.15
35474	36474	1 1/2 x 1 1/2 x 1/2	1.41	1.66	1.08
35494	36494	2 x 2 x 1 1/2	2.02	2.16	2.14
35495	36495	2 x 2 x 1 1/4	1.90	2.10	1.99
35496	36496	2 x 2 x 1	1.73	2.02	1.80
35497	36497	2 x 2 x 3/4	1.60	1.97	1.67
35498	36498	2 x 2 x 1/2	1.49	1.60	1.55
35499	-	2 x 2 x 3/8	1.42	1.81	1.50
35570	36570	2 1/2 x 2 1/2 x 2	2.39	2.60	3.65
35571	36571	2 1/2 x 2 1/2 x 1 1/2	2.16	2.51	3.30
35572	36572	2 1/2 x 2 1/2 x 1 1/4	2.04	2.45	3.09
35573	36573	2 1/2 x 2 1/2 x 1	1.87	2.37	2.92
35574	36574	2 1/2 x 2 1/2 x 3/4	1.74	2.32	2.67
35575	36575	2 1/2 x 2 1/2 x 1/2	1.61	2.24	2.62

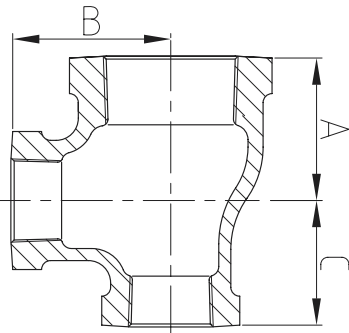


Materials: ASTM A197 / A197M
 Dimensions: Fittings ASME B16.3, B16.14
 Unions B16.39
 Threads: ASME B1.20.1 - NPT

Logo marking:



...REDUCING TEES (ON BRANCH)						
BLACK	GALV.	SIZE	A (inch)	B (inch)	Lb	
35580	36580	3 x 3 x 2 1/2	2.83	2.99	5.70	
35581	36581	3 x 3 x 2	2.52	2.89	5.02	
35582	36582	3 x 3 x 1 1/2	2.29	2.80	4.46	
35583	36583	3 x 3 x 1 1/4	2.17	2.74	4.27	
35584	36584	3 x 3 x 1	2.00	2.66	4.04	
35585	-	3 x 3 x 3/4	2.83	2.99	3.81	
35588	36588	4 x 4 x 3	3.30	3.60	9.52	
35589	36589	4 x 4 x 2 1/2	3.05	3.51	8.70	
35590	36590	4 x 4 x 2	2.74	3.41	7.74	
35592	36592	4 x 4 x 1 1/4	2.36	3.31	10.65	
35593	36593	4 x 4 x 1	2.20	3.23	6.65	

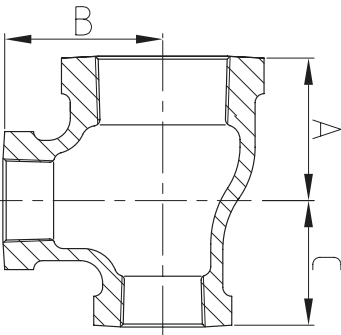


REDUCING TEES (ON RUN)						
BLACK	GALV.	SIZE	A (inch)	B (inch)	C (inch)	Lb
35430	36430	3/4 x 1/2 x 3/4	0.13	1.31	1.22	0.46
35432	-	3/4 x 1/2 x 1	1.50	1.34	1.30	0.58
35433	36433	3/4 x 1/2 x 1/2	1.20	1.22	1.12	0.39
-	36435	3/4 x 1/4 x 3/4	1.31	1.31	1.08	0.39
35442	36442	1 x 3/4 x 1	1.50	1.50	1.45	0.74
35443	36443	1 x 3/4 x 3/4	1.37	1.45	1.31	0.63
35445	36445	1 x 3/4 x 1/2	1.26	1.40	1.20	0.56
35448	36448	1 x 1/2 x 1	1.50	1.50	1.45	0.69
35449	36449	1 x 1/2 x 3/4	1.37	1.45	1.22	0.59
35450	36450	1 x 1/2 x 1/2	1.26	1.40	1.12	0.51
35456	-	1 1/4 x 1 x 1 1/2	1.75	1.94	1.80	1.23
35457	36457	1 1/4 x 1 x 1 1/4	1.75	1.75	1.67	1.10
35458	36458	1 1/4 x 1 x 1	1.59	1.67	1.50	0.98
35459	36459	1 1/4 x 1 x 3/4	1.45	1.62	1.37	0.86
35460	36460	1 1/4 x 1 x 1/2	1.34	1.53	1.26	0.76
35461	36461	1 1/4 x 3/4 x 1 1/4	1.75	1.75	1.62	1.00
35462	36462	1 1/4 x 3/4 x 1	1.58	1.67	1.45	0.87
35463	-	1 1/4 x 3/4 x 3/4	1.45	1.62	1.31	0.75
35464	-	1 1/4 x 3/4 x 1/2	1.57	1.67	1.46	0.78
35465	36465	1 1/4 x 1/2 x 1 1/4	1.75	1.75	1.53	0.95
35466	-	1 1/4 x 1/2 x 1	1.58	1.67	1.36	0.82
35467	-	1 1/4 x 1/2 x 3/4	1.38	1.50	1.14	0.68
35468	-	1 1/4 x 1/2 x 1/2	1.34	1.50	1.06	0.63
35469	36469	1 1/2 x 1 1/4 x 2	2.17	2.03	2.11	1.85
35475	36475	1 1/2 x 1 1/4 x 1 1/2	1.94	1.94	1.88	1.45
35476	36476	1 1/2 x 1 1/4 x 1 1/4	1.82	1.88	1.75	1.33
35477	36477	1 1/2 x 1 1/4 x 1	1.65	1.80	1.58	1.22
35478	36478	1 1/2 x 1 1/4 x 3/4	1.52	1.75	1.43	1.04
35479	36479	1 1/2 x 1 1/4 x 1/2	1.41	1.66	1.34	0.98
35480	-	1 1/2 x 1 x 1 1/2	1.94	1.94	1.80	1.36
35481	-	1 1/2 x 1 x 1 1/4	1.77	1.85	1.63	1.23
35482	36482	1 1/2 x 1 x 1	1.65	1.80	1.50	1.12
35483	36483	1 1/2 x 1 x 3/4	1.57	1.69	1.38	1.01
35484	36484	1 1/2 x 1 x 1/2	1.06	1.61	1.26	0.90

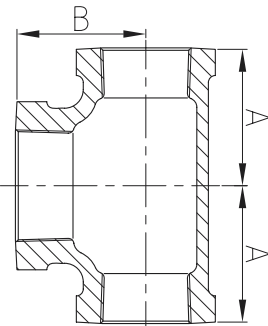


Materials: ASTM A197 / A197M
 Dimensions: Fittings ASME B16.3, B16.14
 Unions B16.39
 Threads: ASME B1.20.1 - NPT

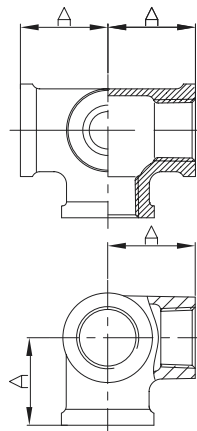
Logo marking:



...REDUCING TEES (ON RUN)						
BLACK	GALV.	SIZE	A (inch)	B (inch)	C (inch)	Lb
35485	36485	1 1/2 x 3/4 x 1 1/2	1.94	1.94	1.75	1.29
35486	36486	1 1/2 x 3/4 x 1 1/4	1.81	1.89	1.61	1.22
35487	36487	1 1/2 x 3/4 x 1	1.73	1.81	1.38	1.22
35488	-	1 1/2 x 3/4 x 3/4	1.50	1.69	1.26	0.86
35490	36490	1 1/2 x 1/2 x 1 1/2	1.94	1.94	1.66	1.24
35492	36492	1 1/2 x 1/2 x 1	1.73	1.81	1.34	0.99
35530	36530	2 x 1 1/2 x 2	2.25	2.25	2.16	2.25
35531	36531	2 x 1 1/2 x 1 1/2	2.02	2.16	1.94	1.88
35532	36532	2 x 1 1/2 x 1 1/4	1.90	2.10	1.82	1.77
35533	36533	2 x 1 1/2 x 1	1.73	2.02	1.65	1.59
35534	36534	2 x 1 1/2 x 3/4	1.56	1.93	1.48	1.44
-	36535	2 x 1 1/2 x 1/2	1.50	1.89	1.42	1.37
35540	-	2 x 1 1/4 x 2	2.25	2.25	2.10	2.16
35541	36541	2 x 1 1/4 x 1 1/2	2.02	2.16	1.88	1.80
35542	36542	2 x 1 1/4 x 1 1/4	1.90	2.10	1.75	1.64
35543	-	2 x 1 1/4 x 1	1.57	2.01	1.73	1.46
35550	36550	2 x 1 x 2	2.25	2.25	2.02	2.07
35551	-	2 x 1 x 1 1/2	2.02	2.16	1.80	1.76
35553	36553	2 x 1 x 1	1.73	2.01	1.50	1.40
35560	36560	2 x 3/4 x 2	2.25	2.25	1.97	2.00
35562	-	2 x 3/4 x 3/4	1.61	1.93	1.26	1.17
35561	36561	2 x 1/2 x 2	2.25	2.25	1.88	2.04
35577	-	2 1/2 x 3/4 x 2 1/2	2.64	2.64	2.30	3.83
35578	-	2 1/2 x 2 x 2 1/2	2.70	2.70	2.60	4.21
35576	-	2 1/2 x 2 x 2	2.39	2.60	2.25	3.20



REDUCING TEES (BULLHEAD)					
BLACK	GALV.	SIZE	A (inch)	B (inch)	Lb
35419	36419	1/2 x 1/2 x 1	1.36	1.26	0.49
35420	36420	1/2 x 1/2 x 3/4	1.22	1.20	0.39
35427	36427	3/4 x 3/4 x 1	1.45	1.37	0.63
35435	36435	1 x 1 x 2	2.02	1.93	1.46
35436	36436	1 x 1 x 1 1/2	1.80	1.65	1.12
35437	36437	1 x 1 x 1 1/4	1.67	1.58	0.98
35451	36451	1 1/4 x 1 1/4 x 1 1/2	1.88	1.82	1.36
35452	-	1 1/4 x 1 1/4 x 2	2.10	1.90	1.70
35470	36470	1 1/2 x 1 1/2 x 2	2.16	2.02	1.98
35493	-	2 x 2 x 2 1/2	2.60	2.39	3.26

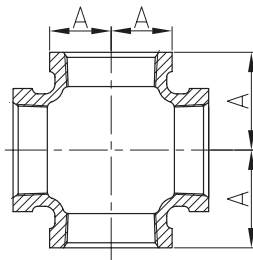


LATERAL SIDE OUTLET TEES				
BLACK	GALV.	SIZE	A (inch)	Lb
35594	36594	1/2	1.10	0.37
35595	36595	3/4	1.30	0.57
35596	36596	1	1.50	0.89
35597	36597	1 1/4	1.77	1.41
35598	36598	1 1/2	1.97	1.87
35599	36599	2	2.28	2.84

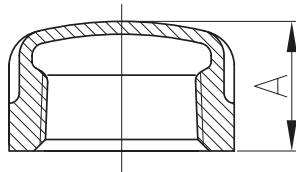


Materials: ASTM A197 / A197M
 Dimensions: Fittings ASME B16.3, B16.14
 Unions B16.39
 Threads: ASME B1.20.1 - NPT

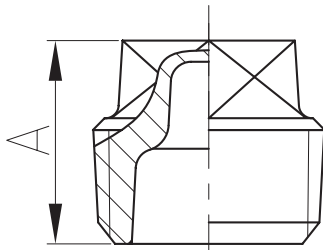
Logo marking:



CROSSES				
BLACK	GALV.	SIZE	A (inch)	Lb
35621	-	1/8	0.69	0.11
35622	36622	1/4	0.81	0.18
35623	36623	3/8	0.95	0.26
35624	36624	1/2	1.12	0.38
35625	36625	3/4	1.31	0.61
35626	36626	1	1.50	0.93
35627	36627	1 1/4	1.75	1.51
35628	36628	1 1/2	1.94	1.88
35629	36629	2	2.25	2.94
35630	36630	2 1/2	2.70	5.22
35631	36631	3	3.08	7.28
35620	36620	4	3.79	12.60



CAPS				
BLACK	GALV.	SIZE	A (inch)	Lb
35501	36501	1/8	0.53	0.03
35502	36502	1/4	0.63	0.05
35503	36503	3/8	0.74	0.08
35504	36504	1/2	0.87	0.11
35505	36505	3/4	0.97	0.18
35506	36506	1	1.16	0.31
35507	36507	1 1/4	1.28	0.45
35508	36508	1 1/2	1.33	0.55
35509	36509	2	1.45	0.94
35510	36510	2 1/2	1.70	1.57
35511	36511	3	1.80	2.21
35512	36512	4	2.08	3.81
35513	36513	5	2.32	5.97
35514	36514	6	2.55	9.24

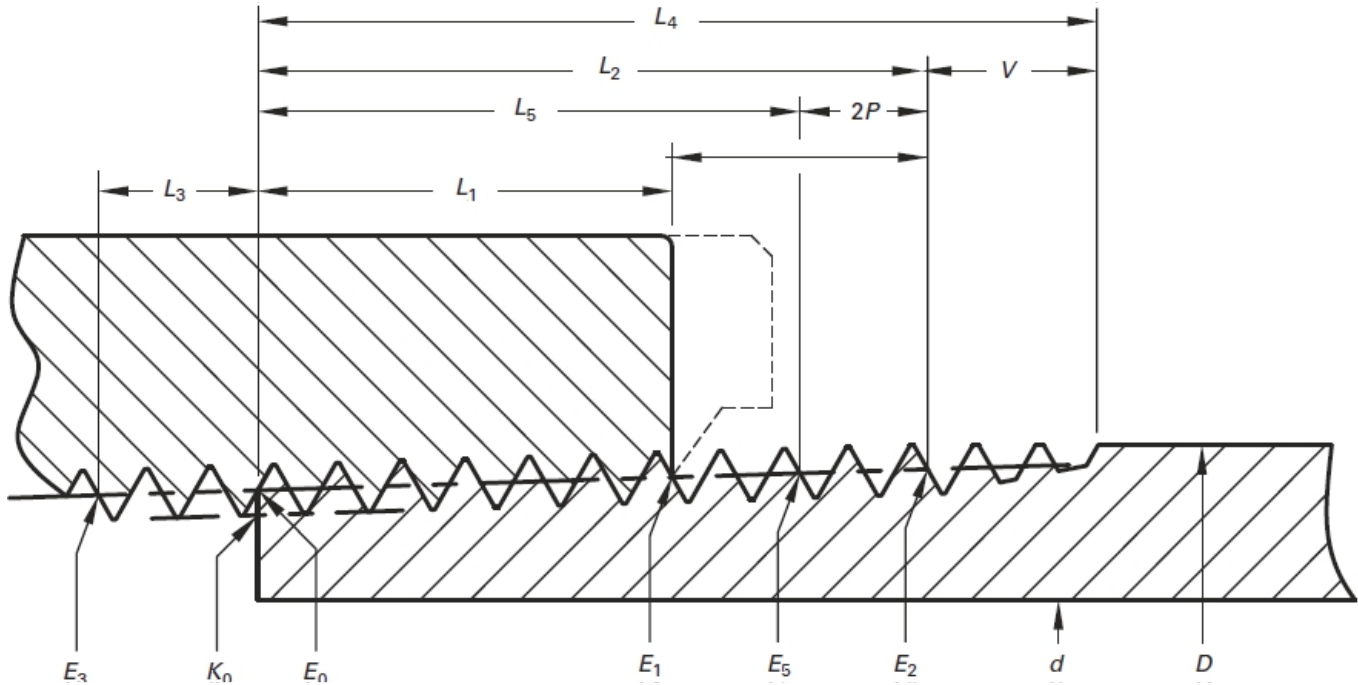


PLUGS				
BLACK	GALV.	SIZE	A (inch)	Lb
35601	36601	1/8	0.61	0.02
35602	36602	1/4	0.72	0.03
35603	36603	3/8	0.79	0.05
35604	36604	1/2	0.94	0.08
35605	36605	3/4	1.07	0.13
35606	36606	1	1.25	0.19
35607	36607	1 1/4	1.36	0.32
35608	36608	1 1/2	1.45	0.42
35609	36609	2	1.56	0.64
35610	36610	2 1/2	1.81	1.04
35611	36611	3	1.93	1.59
35612	36612	4	2.54	2.61
35613	36613	5	2.68	7.93
35614	36614	6	2.81	6.57



Materials: ASTM A197 / A197M
 Dimensions: Fittings ASME B16.3, B16.14
 Unions B16.39
 Threads: ASME B1.20.1 - NPT

Logo marking:



Nominal Pipe Size	O.D. of Pipe, D	Threads/Inch, n	Pitch of Thread P	Pitch Diameter at Beginning of External Thread E_0	Handtight Engagement Length, ¹ L_1		Pitch Diameter, ² E_1	Effective Thread, External Length, ³ L_2		Pitch Diameter, E_3	Length, L_1 Plane to L_2 Plane, External Thread, $L_2 - L_1$	
					in.	Threads		in.	Threads		in.	Threads
1/8	0.4050	27	0.03703704	0.36351	0.1615	4.36	0.37360	0.2639	7.13	0.38000	0.1024	2.76
1/4	0.5400	18	0.05555556	0.47739	0.2278	4.10	0.49163	0.4018	7.23	0.50250	0.1740	3.13
3/8	0.6750	18	0.05555556	0.61201	0.2400	4.32	0.62701	0.4078	7.34	0.63750	0.1678	3.02
1/2	0.8400	14	0.07142857	0.75843	0.3200	4.48	0.77843	0.5337	7.47	0.79178	0.2137	2.99
3/4	1.0500	14	0.07142857	0.96768	0.3390	4.75	0.98887	0.5457	7.64	1.00178	0.2067	2.89
1	1.3150	11.5	0.08695652	1.21363	0.4000	4.60	1.23863	0.6838	7.85	1.25631	0.2828	3.25
1 1/4	1.6600	11.5	0.08695652	1.55713	0.4200	4.83	1.58338	0.7068	8.13	1.60131	0.2868	3.30
1 1/2	1.9000	11.5	0.08695652	1.79609	0.4200	4.83	1.82234	0.7235	8.32	1.84131	0.3035	3.49
2	2.3750	11.5	0.08695652	2.26902	0.4360	5.01	2.29627	0.7565	8.70	2.31630	0.3205	3.69
2 1/2	2.8750	8	0.12500000	2.71953	0.6820	5.46	2.76216	1.1375	9.10	2.79063	0.4555	3.64
3	3.5000	8	0.12500000	3.34063	0.7660	6.13	3.38850	1.2000	9.60	3.41563	0.4340	3.47
4	4.5000	8	0.12500000	4.33438	0.8440	6.75	4.38713	1.3000	10.40	4.41563	0.4560	3.65
5	5.5630	8	0.12500000	5.39073	0.9370	7.50	5.44929	1.4063	11.25	5.47863	0.4693	3.75
6	6.6250	8	0.12500000	6.44609	0.9580	7.66	6.50597	1.5125	12.10	6.54063	0.5545	4.44

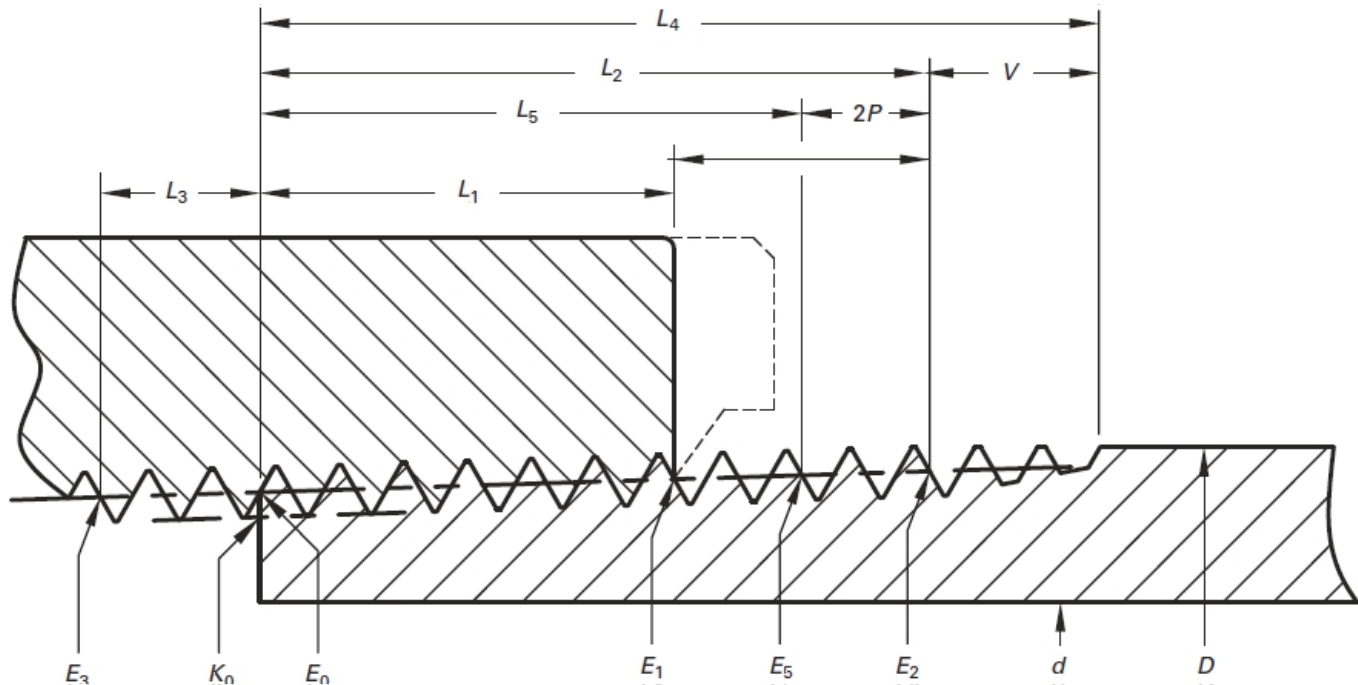
GENERAL NOTE: The basic dimensions of the American National Standard Taper Pipe Thread are given in inches to four or five decimal places. While this implies a greater degree of precision than is ordinarily attained, these dimensions are the basis of gage dimensions and are so expressed for the purpose of eliminating errors in computations.

- NOTES:
 (1) Also length of L1 ring gage and length from gaging notch to small end of L1 plug gage.
 (2) Also pitch diameter at gaging notch of L1 plug gage (hand-tight plane).
 (3) Also threaded length of L1 plug gage.
 (4) Reference dimension.
 (5) The length L5 from the end of the pipe determines the plane beyond which the thread form is incomplete at the crest. The next two threads are complete at the root. At this plane, the cone formed by the crests of the thread intersects the cylinder forming the external surface of the pipe ($L_5 \geq L_2 - 2P$).
 (6) Given as information for use in selecting tap drills (see Nonmandatory Appendix B).



Materials: ASTM A197 / A197M
 Dimensions: Fittings ASME B16.3, B16.14
 Unions B16.39
 Threads: ASME B1.20.1 - NPT

Logo marking:



Nominal Pipe Size	Wrench Make-Up Length, Internal Thread		Pitch Diameter, E_3	Vanish Thread, V		Overall Length External Thread, L_4	Length, L_5	Pitch Diameter, E_5	Height of Thread, h	Change in Diameter per Turn of Thread, $0.0625/n$	Basic Minor ⁶ Diameter at Small End of Pipe, K_9
	Length, L_3	Threads		in.	Threads						
1	14	15	16	17	18	19	20	21	22	23	24
1/8	0.1111	3	0.35656	0.1285	3.47	0.3924	0.1898	0.37357	0.02963	0.00231	0.3338
1/4	0.1667	3	0.46697	0.1928	3.47	0.5946	0.2907	0.49556	0.04444	0.00347	0.4329
3/8	0.1667	3	0.60160	0.1928	3.47	0.6006	0.2967	0.63056	0.04444	0.00347	0.5675
1/2	0.2143	3	0.74504	0.2479	3.47	0.7815	0.3909	0.78286	0.05714	0.00446	0.7014
3/4	0.2143	3	0.95429	0.2479	3.47	0.7935	0.4029	0.99286	0.05714	0.00446	0.9106
1	0.2609	3	1.19733	0.3017	3.47	0.9845	0.5089	1.24544	0.06957	0.00543	1.4410
1 1/4	0.2609	3	1.54083	0.3017	3.47	1.0085	0.5329	1.59044	0.06957	0.00543	1.4876
1 1/2	0.2609	3	1.77978	0.3017	3.47	1.0252	0.5496	1.83044	0.06957	0.00543	1.7266
2	0.2609	3	2.25272	0.3017	3.47	1.0582	0.5826	2.30543	0.06957	0.00543	2.1995
2 1/2	0.2500	2	2.70391	0.4338	3.47	1.5712	0.8875	2.77500	0.10000	0.00781	2.6195
3	0.2500	2	3.32500	0.4338	3.47	1.6337	0.9500	3.40000	0.10000	0.00781	3.2406
4	0.2500	2	4.31875	0.4338	3.47	1.7337	1.0500	4.40000	0.10000	0.00781	4.2343
5	0.2500	2	5.37511	0.4338	3.47	1.8400	1.1563	5.46300	0.10000	0.00781	5.2907
6	0.2500	2	6.43047	0.4338	3.47	1.9462	1.2625	6.52500	0.10000	0.00781	6.3460

GENERAL NOTE: The basic dimensions of the American National Standard Taper Pipe Thread are given in inches to four or five decimal places. While this implies a greater degree of precision than is ordinarily attained, these dimensions are the basis of gage dimensions and are so expressed for the purpose of eliminating errors in computations.

- NOTES:
- (1) Also length of L1 ring gage and length from gaging notch to small end of L1 plug gage.
 - (2) Also pitch diameter at gaging notch of L1 plug gage (hand-tight plane).
 - (3) Also threaded length of L1 plug gage.
 - (4) Reference dimension.
 - (5) The length L5 from the end of the pipe determines the plane beyond which the thread form is incomplete at the crest. The next two threads are complete at the root. At this plane, the cone formed by the crests of the thread intersects the cylinder forming the external surface of the pipe ($L_5 \geq L_2 - 2P$).
 - (6) Given as information for use in selecting tap drills (see Nonmandatory Appendix B).



Materials: ASTM A197 / A197M
 Dimensions: Fittings ASME B16.3, B16.14
 Unions B16.39
 Threads: ASME B1.20.1 - NPT

Logo marking:



Certifications:

- FM: * Note below *
- UL: ASME B16.14 & ASME B16.3
- IAPMO: Drinking Water NSF/ANSI/CAN 61
 Lead Content NSF/ANSI/CAN 372
- VERITAS: ISO 9001
 ISO 14001

Note: Most but not all products represented in this document are FM Approved.
 For listing/approval details and limitations, please contact your
 Sales Representative or visit <https://www.approvalguide.com>

Pressure/Temperature Rating

Temperature		Class #150 psig
°F	°C	
-20~150	-29~66	300
200	93	265
250 ¹	121 ¹	225
300	149	185
350 ¹	177 ¹	150

¹ Permissible for service temperature up to 366 °F/186 °C, reflecting the temperature of saturated steam at 150 psig.

Please note that although products are designed using the ASME B16.3 standard which have a pressure rating of 300 psi, FM approval is only for up to 175 psi and there are no temperature range requirements specified by the FM1920 standard.