

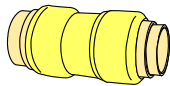


**BMI CANADA LEAD FREE  
PUSH-FIT FITTING PRICE LIST**

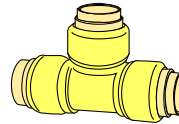


**PFT  
24-1**

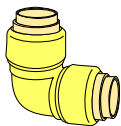
July 3, 2024



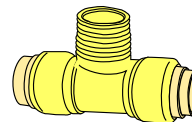
PUSH FIT COUPLINGS				
BMI#	Size	Packing	Barcode	\$
38004	1/2	10/200	777701380044	20.67
38005	3/4	5/100	777701380051	32.86
38006	1	2/60	777701380068	54.54
38007	1 1/4	1/10	777701380075	183.56
38008	1 1/2	1/6	777701380082	272.24
38009	2	1/4	777701380099	395.13
38023	3/4 x 1/2	5/120	777701380235	27.79
38027	1 x 3/4	2/80	777701380273	52.51
38031	1 1/4 x 1	1/10	777701380310	116.66
38035	1 1/2 x 1 1/4	1/6	777701380358	217.78
38040	2 x 1 1/2	1/5	777701380402	350.02



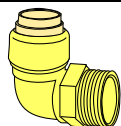
PUSH FIT TEES				
BMI#	Size	Packing	Barcode	\$
38404	1/2	10/120	777701384042	37.42
38405	3/4	5/60	777701384059	64.69
38406	1	2/30	777701384066	115.15
38407	1 1/4	1/6	777701384073	336.40
38408	1 1/2	1/3	777701384080	577.93
38409	2	1/2	777701384097	804.25
38419	1/2 x 1/2x 1	2/40	777701384196	62.26
38420	1/2 x 1/2x 3/4	5/60	777701384202	48.62
38429	3/4 x 3/4 x 1/2	5/60	777701384295	60.34
38430	3/4 x 1/2 x 3/4	5/60	777701384301	56.11
38431	3/4 x 1/2 x 1/2	5/60	777701384318	53.03
38438	1 x 1 x 3/4	2/30	777701384387	96.25



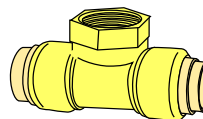
PUSH FIT 90° ELBOWS				
BMI#	Size	Packing	Barcode	\$
38304	1/2	10/150	777701383045	27.30
38305	3/4	5/100	777701383052	44.19
38306	1	2/60	777701383069	79.92
38307	1 1/4	1/8	777701383076	259.42
38308	1 1/2	1/5	777701383083	378.01
38309	2	1/3	777701383090	628.08
38323	3/4 x 1/2	5/100	777701383236	36.18



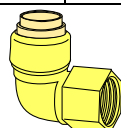
PUSH FIT x MIPS TEES				
BMI#	Size	Packing	Barcode	\$
38574	1/2	10/120	777701385742	34.59
38575	3/4	5/60	777701385759	62.93



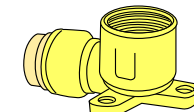
PUSH FIT x MIPS 90° ELBOWS				
BMI#	Size	Packing	Barcode	\$
38364	1/2	10/150	777701383649	28.20
38365	3/4	5/100	777701383656	47.00
38366	1	2/50	777701383663	75.20



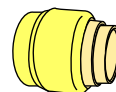
PUSH FIT x FIPS TEES				
BMI#	Size	Packing	Barcode	\$
38591	1/2	10/100	777701385919	36.54
38592	3/4	5/50	777701385926	63.33



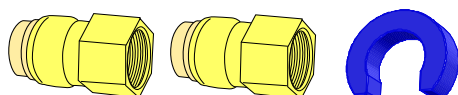
PUSH FIT x FIPS 90° ELBOWS				
BMI#	Size	Packing	Barcode	\$
38384	1/2	10/150	777701383847	29.14
38385	3/4	5/100	777701383854	46.06
38386	1	2/50	777701383861	71.44



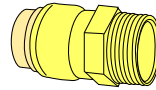
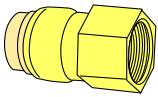
1/2" PUSH FIT x FIPS 90° DROPEARS				
BMI#	Size	Packing	Barcode	\$
38399	1/2	10/100	777701383991	37.31



PUSH FIT CAPS				
BMI#	Size	Packing	Barcode	\$
38504	1/2	10/300	777701385049	14.60
38505	3/4	5/200	777701385056	20.27
38506	1	2/140	777701385063	37.63
38507	1 1/4	1/20	777701385070	97.70
38508	1 1/2	1/12	777701385087	154.25
38509	2	1/8	777701385094	247.72

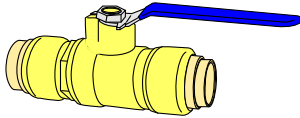


PUSH FIT x FIPS WATER HEATER KIT				
BMI#	Size	Packing	Barcode	\$
38724	1/2 x 3/4	1/1	777701387241	70.76
38725	3/4 x 3/4	2/2	777701387258	71.48



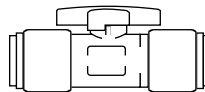
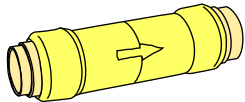
PUSH FIT x FIPS ADAPTERS				
BMI#	Size	Packing	Barcode	\$
38704	1/2	10/200	777701387043	22.38
38705	3/4	5/80	777701387050	34.79
38706	1	2/60	777701387067	51.15
38707	1 1/4	1/10	777701387074	146.09
38708	1 1/2	1/8	777701387081	196.70
38709	2	1/6	777701387098	289.59
38717	1/2 x 3/4	5/180	777701387173	25.34

PUSH FIT x MIPS ADAPTERS				
BMI#	Size	Packing	Barcode	\$
38804	1/2	10/150	777701388040	18.63
38805	3/4	5/100	777701388057	25.26
38806	1	2/64	777701388064	46.55
38807	1 1/4	2/10	777701388071	146.09
38808	1 1/2	1/8	777701388088	196.70
38809	2	1/6	777701388095	289.59
38817	1/2 x 3/4	5/180	777701388170	26.49



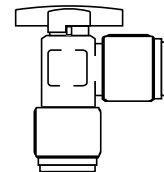
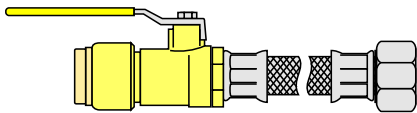
PUSH FIT BALL VALVES				
BMI#	Size	Packing	Barcode	\$
38604	1/2	10/80	777701386046	65.49
38605	3/4	5/45	777701386053	90.37
38606	1	2/30	777701386060	178.47

DISCONNECT TOOLS				
BMI#	Size	Packing	Barcode	\$
38104	1/2	50/900	777701381041	1.43
38105	3/4	25/500	777701381058	2.30
38106	1	10/400	777701381065	2.93
38107	1 1/4	1/80	777701381072	57.16
38108	1 1/2	1/48	777701381089	85.94
38109	2	1/30	777701381096	114.73



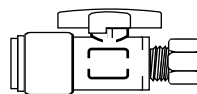
PUSH FIT CHECK VALVES				
BMI#	Size	Packing	Barcode	\$
38654	1/2	10/50	777701386541	35.63
38655	3/4	5/30	777701386558	73.48
38656	1	2/30	777701386565	111.68

PUSH FIT CHROME PLATED STRAIGHT VALVE				
BMI#	Size	Packing	Barcode	\$
38904	1/2 x 1/2	10/100	777701389047	58.65



PUSH FIT x FIPS BRAIDED FLEXIBLE TUBE				
BMI#	Size	Packing	Barcode	\$
38612	3/4 x 12	5/25	777701386121	143.60
38615	3/4 x 15	5/25	777701386152	150.30
38618	3/4 x 18	5/25	777701386183	153.17
38624	3/4 x 24	5/25	777701386244	158.92
38632	1/2 x 3/4 x 12"	5/25	777701386329	118.72
38635	1/2 x 3/4 x 15"	5/25	777701386350	123.50
38638	1/2 x 3/4 x 18"	5/25	777701386381	126.36
38644	1/2 x 3/4 x 24"	5/25	777701386442	137.85

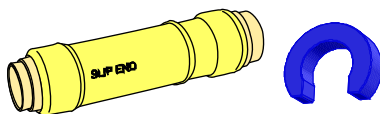
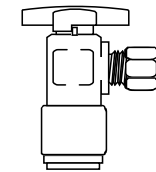
PUSH FIT CHROME PLATED ANGLE VALVE				
BMI#	Size	Packing	Barcode	\$
38909	1/2 x 1/2	10/100	777701389092	59.41



PUSH FIT CHROME PLATED STRAIGHT VALVE				
BMI#	Size	Packing	Barcode	\$
38984	1/2 x 3/8 (O.D.)	10/100	777701389849	42.82

PUSH FIT x FIPS BRAIDED FLEXIBLE TUBE				
BMI#	Size	Packing	Barcode	\$
38212	3/4 x 12"	5/25	777701382123	84.61
38215	3/4 x 15"	5/25	777701382154	90.23
38218	3/4 x 18"	5/25	777701382185	93.98
38224	3/4 x 24"	5/25	777701382246	97.75

PUSH FIT CHROME PLATED ANGLE VALVE				
BMI#	Size	Packing	Barcode	\$
38989	1/2 x 3/8 (O.D.)	10/100	777701389894	44.24



LONG REPAIR COUPLINGS				
BMI#	Size	Packing	Barcode	\$
38014	1/2	10/50	777701380143	45.11
38015	3/4	5/30	777701380150	74.25
38016	1	5/25	777701380167	116.55

PUSH FIT CHROME PLATED ANGLE VALVE				
BMI#	Size	Packing	Barcode	\$
38919	1/2 x 3/8 x 3/8 (O.D.)	10/100	777701389191	66.63

