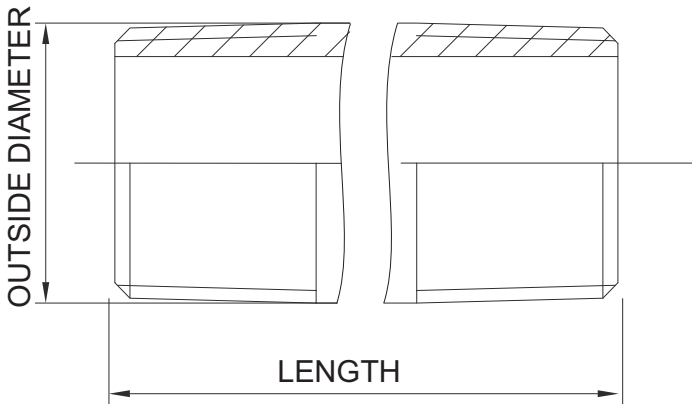


STEEL PIPE NIPPLES



Material: ASTM A53/A106/A333
 Sch. 40 ERW (Welded) Grade 'A' Pipe
 Sch. 80 Seamless grade 'B' Pipe

Dimensions: ASTM A733
 Threads: ASME B1.20.1 NPT



Size	O.D.	Length Close	Steel Pipe Nipples																							
			Nipples Length																							
IN	IN	IN	1 1/2	2	2 1/2	3	3 1/2	4	4 1/2	5	5 1/2	6	7	8	9	10	11	12	18	24	30	36	48	60	72	
1/8	0.405	0.750																								
1/4	0.540	0.875																								
3/8	0.675	1.000																								
1/2	0.840	1.125																								
3/4	1.050	1.375																								
1	1.315	1.500																								
1 1/4	1.660	1.625																								
1 1/2	1.900	1.750																								
2	2.375	2.000																								
2 1/2	2.875	2.500																								
3	3.500	2.675																								
4	4.500	2.875																								
6	6.625	3.125																								