

RED BRASS PIPE NIPPLES & CHROME NIPPLES

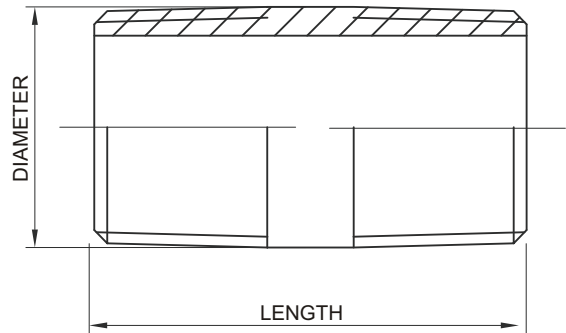


Materials: ASTM B43
Sch. 40 Seamless,
Red Brass Pipe



Dimensions: ASTM B687

Threads: ASME B1.20.1 NPT



All measurements in inches

Pipe Size	Outside Diameter	Length Close	Wall Thickness	Thickness Tolerance	Sch. 40 Red Brass Pipe Nipples																				
					Nipples Length																				
1/8"	0.405	3/4	0.062	0.004	1-1/2"	2"	2-1/2"	3"	3-1/2"	4"	4-1/2"	5"	5-1/2"	6"	7"	8"	9"	10"	11"	12"					
1/4"	0.540	7/8	0.082	0.005	1 1/2"	2"	2 1/2"	3"	3 1/2"	4"	4 1/2"	5"	5 1/2"	6"	7"	8"	9"	10"	11"	12"					
3/8"	0.675	1	0.090	0.005	1 1/2"	2"	2 1/2"	3"	3 1/2"	4"	4 1/2"	5"	5 1/2"	6"	7"	8"	9"	10"	11"	12"					
1/2"	0.840	1 1/8	0.107	0.006	1 1/2"	2"	2 1/2"	3"	3 1/2"	4"	4 1/2"	5"	5 1/2"	6"	6-1/2"	7"	7-1/2"	8"	8-1/2"	9"	9-1/2"	10"	10-1/2"	11"	12"
3/4"	1.050	1 3/8	0.114	0.006	1 1/2"	2"	2 1/2"	3"	3 1/2"	4"	4 1/2"	5"	5 1/2"	6"	7"	8"	9"	10"	11"	12"					
1"	1.315	1 1/2	0.126	0.007	1 1/2"	2"	2 1/2"	3"	3 1/2"	4"	4 1/2"	5"	5 1/2"	6"	7"	8"	9"	10"	11"	12"					
1 1/4"	1.660	1 5/8	0.146	0.008	-	2"	2 1/2"	3"	3 1/2"	4"	4 1/2"	5"	5 1/2"	6"	7"	8"	9"	10"	11"	12"					
1 1/2"	1.900	1 3/4	0.150	0.008	-	2"	2 1/2"	3"	3 1/2"	4"	4 1/2"	5"	5 1/2"	6"	7"	8"	9"	10"	11"	12"					
2"	2.375	2	0.156	0.009	-	-	2 1/2"	3"	3 1/2"	4"	4 1/2"	5"	5 1/2"	6"	7"	8"	9"	10"	11"	12"					
2 1/2"	2.875	2 1/2	0.187	0.010	-	-	-	3"	3 1/2"	4"	4 1/2"	5"	5 1/2"	6"	7"	8"	9"	10"	11"	12"					
3"	3.500	2 5/8	0.219	0.012	-	-	-	3"	3 1/2"	4"	4 1/2"	5"	5 1/2"	6"	7"	8"	9"	10"	11"	12"					
4"	4.500	2 7/8	0.250	0.013	-	-	-	3"	3 1/2"	4"	4 1/2"	5"	5 1/2"	6"	7"	8"	9"	10"	11"	12"					

Sch. 40 Red Brass Pipe Nipple with Chrome Plating																								
3/8"	0.675	1	0.090	0.005	1 1/2"	2"	2 1/2"	3"	3 1/2"	4"	4 1/2"	5"	5 1/2"	6"										
1/2"	0.840	1 1/8	0.107	0.006	1 1/2"	2"	2 1/2"	3"	3 1/2"	4"	4 1/2"	5"	5 1/2"	6"						9"				

Pipe Size	Outside Diameter	Wall Thickness	Thickness Tolerance	Sch. 40 Red Brass Precut Pipe																					
				Precut Pipe Length																					
1/4"	0.540	0.082	0.005	-	-	-	-	-	-	-	-	-	-	-	-	-	-	-	-	-	-	-	-	-	144"
3/8"	0.675	0.090	0.005	-	-	-	-	-	-	-	-	-	-	-	-	-	-	-	-	-	-	-	-	-	144"
1/2"	0.840	0.107	0.006	14"	15"	16"	18"	24"	-	30"	36"	-	-	48"	-	60"	72"	96"	120"	144"					
3/4"	1.050	0.114	0.006	14"	15"	16"	18"	24"	-	30"	36"	-	-	48"	-	60"	72"	96"	120"	144"					
1"	1.315	0.126	0.007	14"	15"	16"	18"	24"	28"	30"	36"	40"	42"	48"	54"	60"	72"	96"	120"	144"					
1 1/4"	1.660	0.146	0.008	14"	15"	16"	18"	24"	-	30"	36"	-	-	48"	-	60"	72"	96"	120"	144"					
1 1/2"	1.900	0.150	0.008	14"	15"	16"	18"	24"	-	30"	36"	-	-	48"	-	60"	72"	96"	120"	144"					
2"	2.375	0.156	0.009	14"	15"	16"	18"	24"	28"	30"	36"	40"	42"	48"	54"	60"	72"	96"	120"	144"					
2 1/2"	2.875	0.187	0.010	14"	15"	16"	18"	24"	-	30"	36"	-	-	48"	-	60"	72"	96"	120"	144"					
3"	3.500	0.219	0.012	14"	15"	16"	18"	24"	-	30"	36"	-	-	48"	50"	60"	72"	96"	120"	144"					
4"	4.500	0.250	0.013	14"	15"	16"	18"	24"	28"	30"	36"	40"	42"	48"	54"	60"	72"	-	-	-					