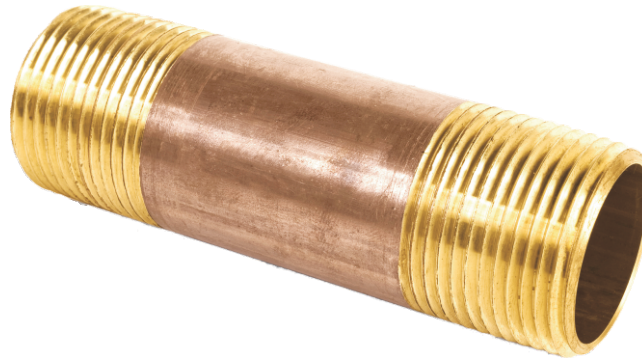


MAMELONS DE TUYAU DE LAITON ROUGE

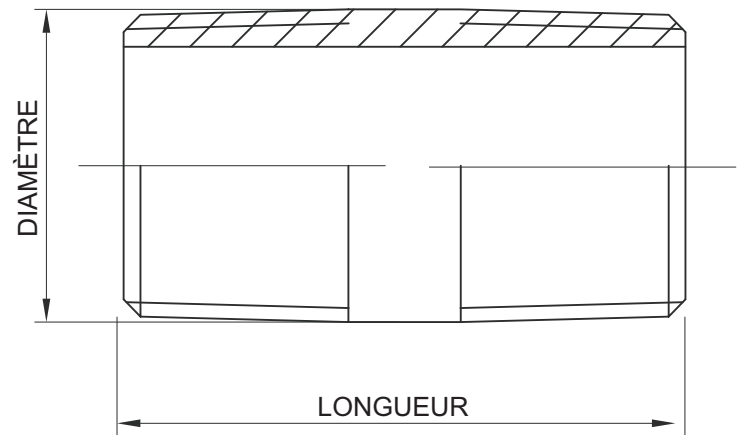


Matériel : ASTM B43

Sch. 40 Tuyaux sans soudure
en laiton rouge

Dimensions : ASTM B687

Filets : ASME B1.20.1 NPT



Taille	Diamètre extérieur	Longueur 'Close'	Épaisseur du mur	Tolérance d'épaisseur	Mamelons de tuyau de laiton rouge Sch. 40										
					Longueur des mamelons										
Pouces	Pouces	Pouces	Pouces(mm)	Pouces(mm)	1 1/2"	2"	2 1/2"	3"	3 1/2"	4"	4 1/2"	5"	5 1/2"	6"	
1/8"	0.405	3/4	0.062(1.57)	0.004(0.10)	1 1/2"	2"	2 1/2"	3"	3 1/2"	4"	4 1/2"	5"	5 1/2"	6"	
1/4"	0.540	7/8	0.082(2.08)	0.005 (0.13)	1 1/2"	2"	2 1/2"	3"	3 1/2"	4"	4 1/2"	5"	5 1/2"	6"	
3/8"	0.675	1	0.090(2.29)	0.005 (0.13)	1 1/2"	2"	2 1/2"	3"	3 1/2"	4"	4 1/2"	5"	5 1/2"	6"	
1/2"	0.840	1 1/8	0.107(2.72)	0.006(0.15)	1 1/2"	2"	2 1/2"	3"	3 1/2"	4"	4 1/2"	5"	5 1/2"	6"	
3/4"	1.050	1 3/8	0.114(2.90)	0.006(0.15)	1 1/2"	2"	2 1/2"	3"	3 1/2"	4"	4 1/2"	5"	5 1/2"	6"	
1"	1.315	1 1/2	0.126(3.20)	0.007(0.18)	1 1/2"	2"	2 1/2"	3"	3 1/2"	4"	4 1/2"	5"	5 1/2"	6"	
1 1/4"	1.660	1 5/8	0.146(3.71)	0.008(0.20)	-	2"	2 1/2"	3"	3 1/2"	4"	4 1/2"	5"	5 1/2"	6"	
1 1/2"	1.900	1 3/4	0.150(3.81)	0.008(0.20)	-	2"	2 1/2"	3"	3 1/2"	4"	4 1/2"	5"	5 1/2"	6"	
2"	2.375	2	0.156(3.96)	0.009(0.23)	-	-	2 1/2"	3"	3 1/2"	4"	4 1/2"	5"	5 1/2"	6"	
2 1/2"	2.875	2 1/2	0.187 (4.75)	0.010 (0.25)	-	-	-	3"	3 1/2"	4"	4 1/2"	5"	5 1/2"	6"	
3"	3.500	2 5/8	0.219 (5.56)	0.012 (0.30)	-	-	-	3"	3 1/2"	4"	4 1/2"	5"	5 1/2"	6"	
4"	4.500	2 7/8	0.250(6.35)	0.013(0.33)	-	-	-	3"	3 1/2"	4"	4 1/2"	5"	5 1/2"	6"	