

# CxF DIELECTRIC UNIONS

Working Pressure & Temperature:

Max.: 82 °C (180 °F) ~ 250 psi (17.24 bar)

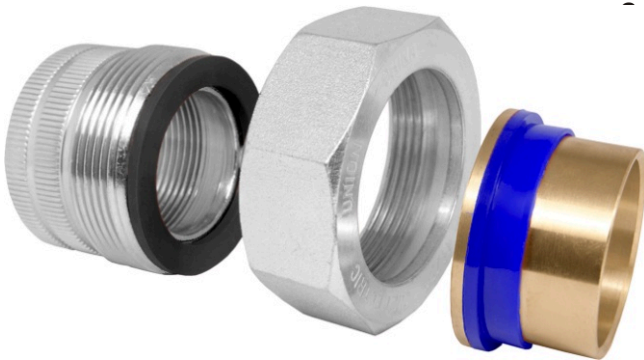
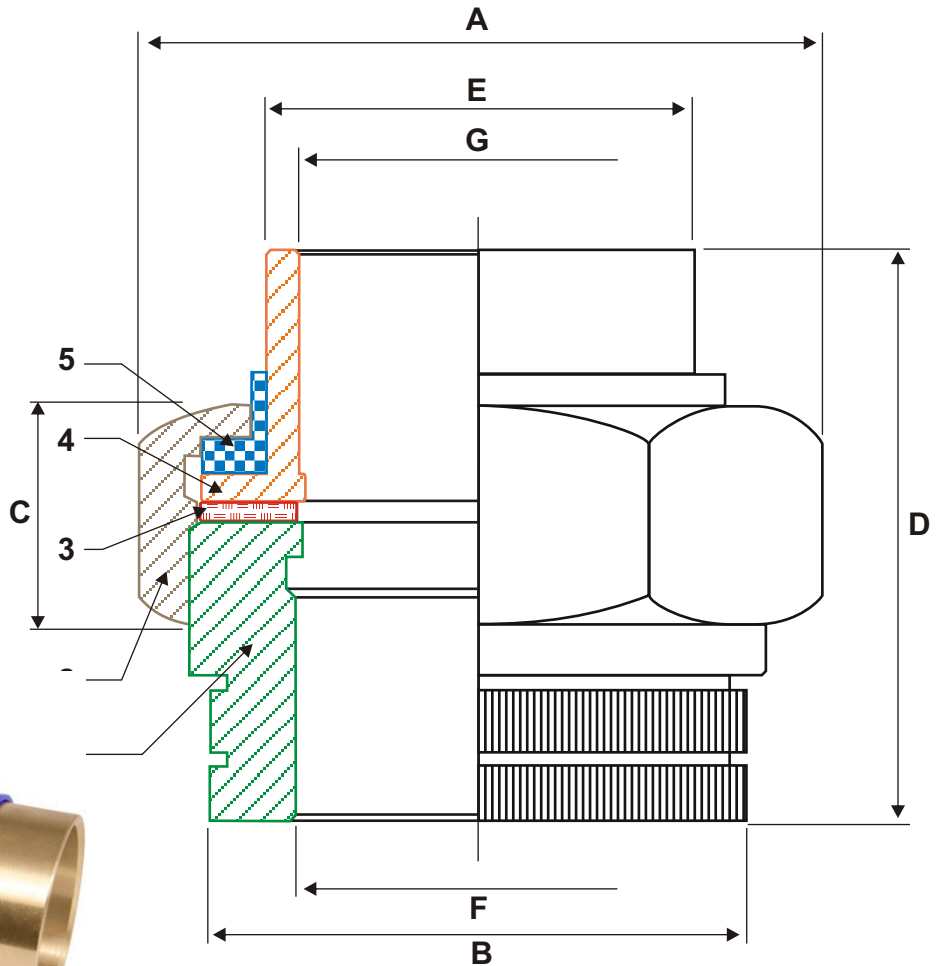
Standards for parts:

Steel: ASTM A108

Brass: ASTM B16

Zinc Plated: ASTM B633

BMI#	Size	mm						
		A	B	C	D	E	F	G
07444	1/2"	41.30	26.40	18.28	47.00	20.80	1/2" NPT	16.00 <sup>+ 0.03</sup> <sub>-0.07</sub>
07445	3/4"	47.00	32.00	18.28	51.50	27.17	3/4" NPT	22.30 <sup>+ 0.08</sup> <sub>-0.02</sub>
07446	1"	53.40	39.00	18.28	57.50	33.30	1" NPT	28.70 <sup>+ 0.05</sup> <sub>-0.05</sub>
07447	1 1/4"	65.00	47.20	21.50	64.00	39.87	1 1/4" NPT	35.00 <sup>+ 0.11</sup> <sub>-0.01</sub>
07448	1 1/2"	75.00	54.70	24.60	64.30	46.45	1 1/2" NPT	41.40 <sup>+ 0.09</sup> <sub>-0.06</sub>
07449	2"	95.30	69.40	27.00	72.50	60.45	2" NPT	54.10 <sup>+ 0.09</sup> <sub>-0.06</sub>



#	PART	MATERIAL
1	THREADED CONNECTOR	ZINC PLATED STEEL
2	HEX. NUT	ZINC PLATED STEEL
3	GASKET	EPDM RUBBER
4	SOLDER CONNECTOR	LEAD FREE BRASS
5	INSULATOR	PLASTIC