

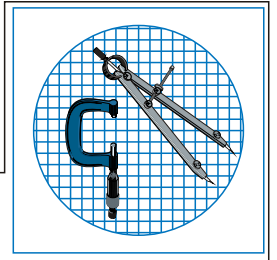


Montreal ~ Toronto ~ Vancouver ~ Cincinnati

[www.bmicanada.com](http://www.bmicanada.com)

1-800-361-1452

1-800-561-8579

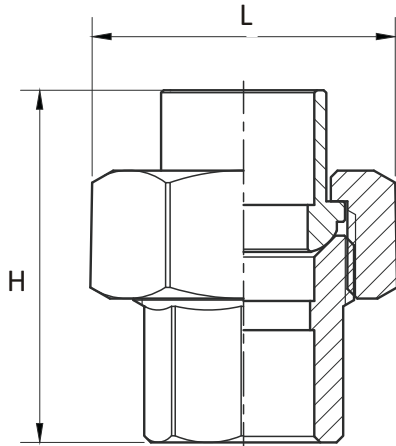


## TECHNICAL INFORMATION

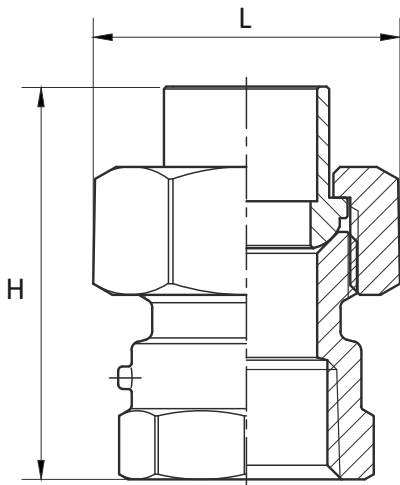
# SOLDER PRESSURE FITTINGS CAST LEAD FREE COPPER ALLOY



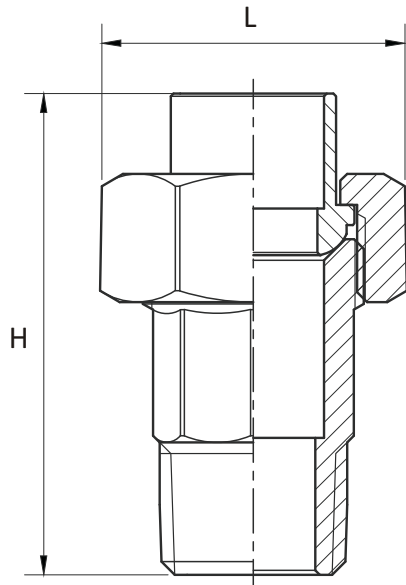
# COPPER ALLOY CAST PRESSURE FITTING



CxC CAST UNIONS				
BMI#	SIZE	L	H	kg
25104	1/2	34.3	39.8	0.100
25105	3/4	41.6	51.4	0.155
25106	1	49.8	60.6	0.310
25107	1 1/4	56.0	65.8	0.467
25108	1 1/2	64.6	75.8	0.578
25109	2	81.7	84.2	0.970
25110	2 1/2	94.9	97.5	1.267
25111	3	107.3	109.6	1.833



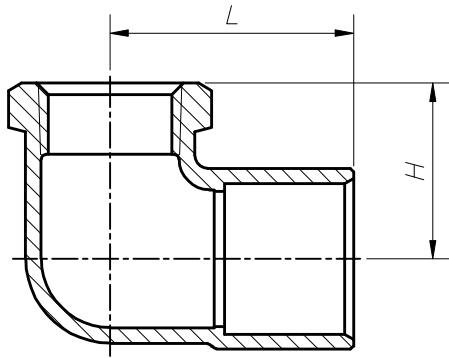
CxF CAST UNIONS				
BMI#	SIZE	L	H	kg
25124	1/2	34.3	44.5	0.128
25125	3/4	41.6	52.9	0.178
25126	1	49.8	63.6	0.284
25127	1 1/4	56.0	71.3	0.396
25128	1 1/2	64.6	81.8	0.614
25129	2	81.7	86.4	0.942



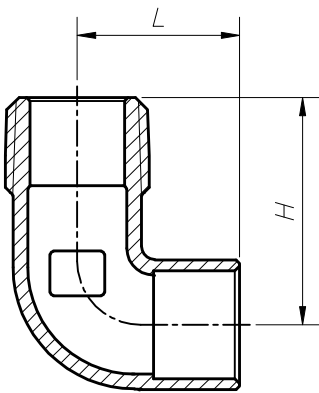
CxM CAST UNIONS				
BMI#	SIZE	L	H	kg
25134	1/2	34.3	54.5	0.120
25135	3/4	41.6	67.9	0.190
25136	1	49.8	78.1	0.295
25137	1 1/4	56.0	88.3	0.433
25138	1 1/2	64.6	100.8	0.626
25139	2	81.7	105.5	0.938



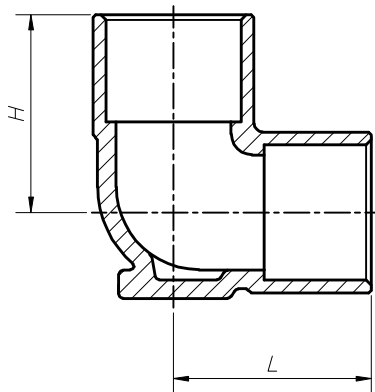
# COPPER ALLOY CAST PRESSURE FITTING



CxM CAST 90° ELBOWS				
BMI#	SIZE	L	H	kg
25384	1/2	27.5	22.5	0.078
25385	3/4	35.5	27.5	0.120
25386	1	41.6	39.4	0.180
25390	3/4 x 1/2	33.0	23.0	0.115
25391	1/2 x 3/4	33.1	23.5	0.095
25392	1/2 x 3/8	23.3	19.5	0.042



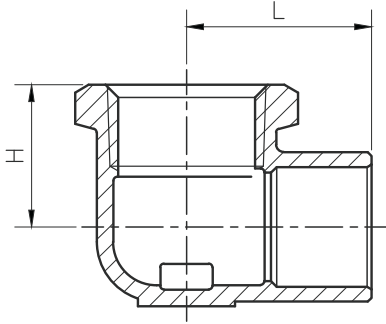
CxF CAST 90° ELBOWS				
BMI#	SIZE	L	H	kg
25364	1/2	24.0	33.6	0.057
25365	3/4	30.4	37.5	0.077
25366	1	41.6	44.0	0.120
25367	3/4 x 1/2	39.0	33.0	0.070



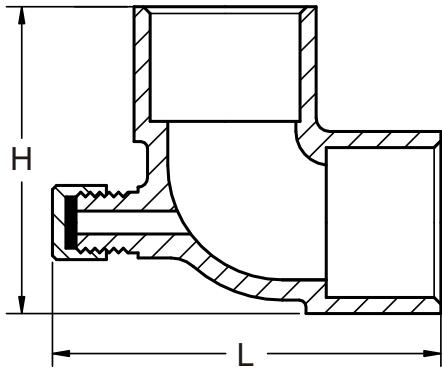
CxC CAST 90° ELBOWS DROPEAR				
BMI#	SIZE	L	H	kg
25360	1/2	23.4	23.4	0.058
25361	3/4	32.0	32.0	0.125



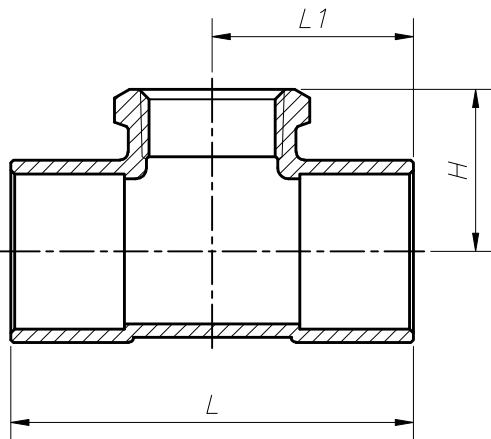
# COPPER ALLOY CAST PRESSURE FITTING



Cx F CAST 90° ELBOWS DROPEAR				
BMI#	SIZE	L	H	kg
25399	1/2	28.8	22.0	0.090
25375	3/4	32.5	24.9	0.125
25377	1	41.1	29.0	0.208
25376	1/2 x 3/8	27.7	20.2	0.080



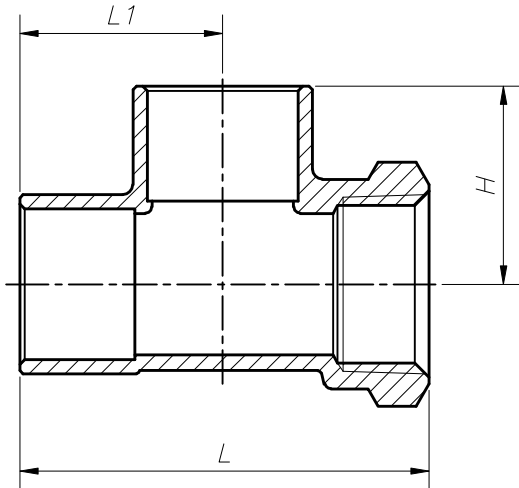
Cx C CAST 90° VENT ELBOWS				
BMI#	SIZE	L	H	kg
25583	1/2	48.0	32.5	0.050
25584	3/4	57.6	44.8	..092



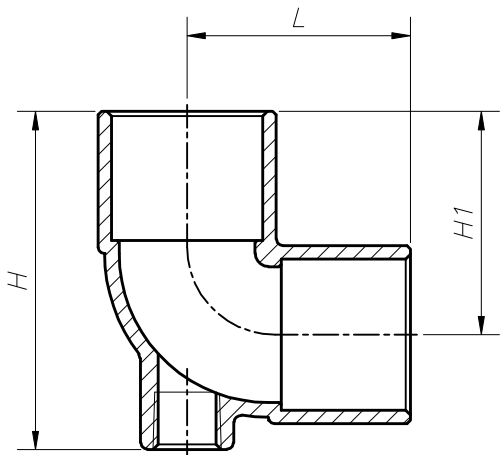
Cx Cx F CAST TEES					
BMI#	SIZE	L	H	L1	kg
25591	1/2	23.0	22.7	26.5	0.080
25592	3/4	70.0	24.3	35.0	0.125
25599	1/2 x 1/2 x 3/4	60.3	20.6	31.8	0.130
25593	3/4 x 3/4 x 1/2	67.0	23.9	33.5	0.070
25597	1 x 1 x 3/4	74.4	30.0	37.2	0.180
25577	1 x 1 x 1/2	73.8	29.1	36.9	0.160
25573	1 1/4 x 1 1/4 x 1/2	79.0	30.7	39.5	0.559
25574	1 1/4 x 1 1/4 x 3/4	84.0	34.5	42.0	0.571
25576	1 1/2 x 1 1/2 x 3/4	90.5	36.5	45.3	0.676



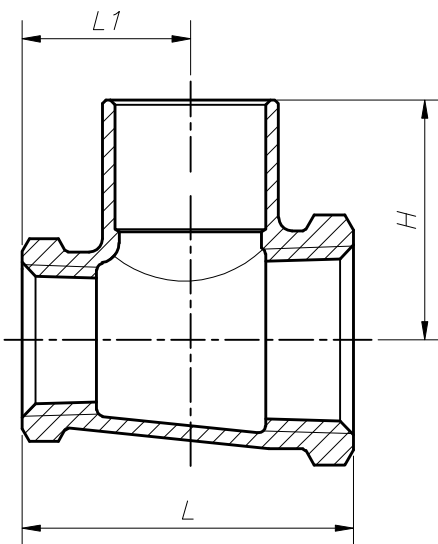
# COPPER ALLOY CAST PRESSURE FITTING



CxFxC CAST TEES					
BMI#	SIZE	L	H	L1	kg
25595	1/2	45.0	25.0	22.6	0.070
25596	3/4	60.5	29.3	30.0	0.150
25598	3/4 x 1/2 x 3/4	56.5	32.1	33.0	0.120
25594	1 x 3/4 x 1	42.0	39.9	42.2	0.180
25578	1 x 1/2 x 1	70.0	42.4	42.2	0.160



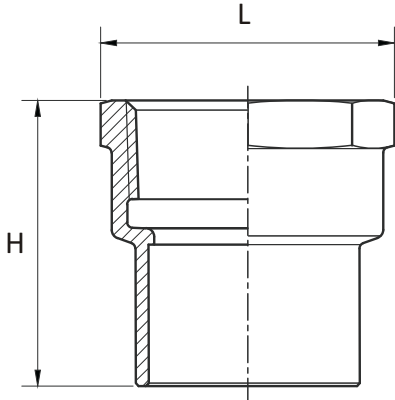
CxFxC CAST BASEBOARD TEES					
BMI#	SIZE	L	H	H1	kg
25579	1/2 x 1/8 x 1/2	24.0	38.5	24.0	0.058
25580	3/4 x 1/8 x 3/4	33.0	50.0	33.0	0.092
25581	1 x 1/8 x 1	41.4	61.0	41.4	0.167
25582	1 1/4 x 1/8 x 1 1/4	46.0	65.8	46.0	0.192



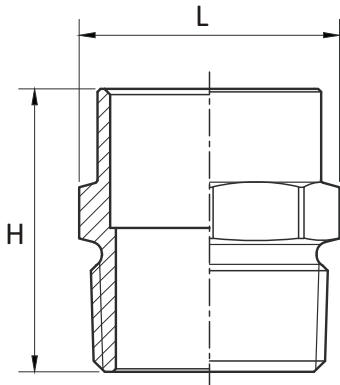
FxFxC CAST TEES					
BMI#	SIZE	L	H	L	kg
25586	3/4	44.5	36.4	22.3	0.135
25587	3/4 x 3/4 x 1/2	44.5	30.7	22.3	0.130
25588	3/4 x 1/2 x 3/4	49.0	35.5	24.9	0.125
25589	3/4 x 1/2 x 1/2	43.5	29.7	21.0	0.125



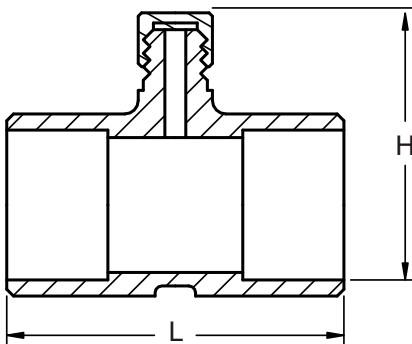
# COPPER ALLOY CAST PRESSURE FITTING



CxF CAST ADAPTERS				
BMI#	SIZE	L	H	kg
25704	1/2	29.5	29.0	0.050
25705	3/4	36.5	34.7	0.080
25706	1	42.0	45.0	0.135
25707	1 1/4	52.0	50.5	0.210
25708	1 1/2	59.4	54.4	0.267
25709	2	72.3	62.0	0.420



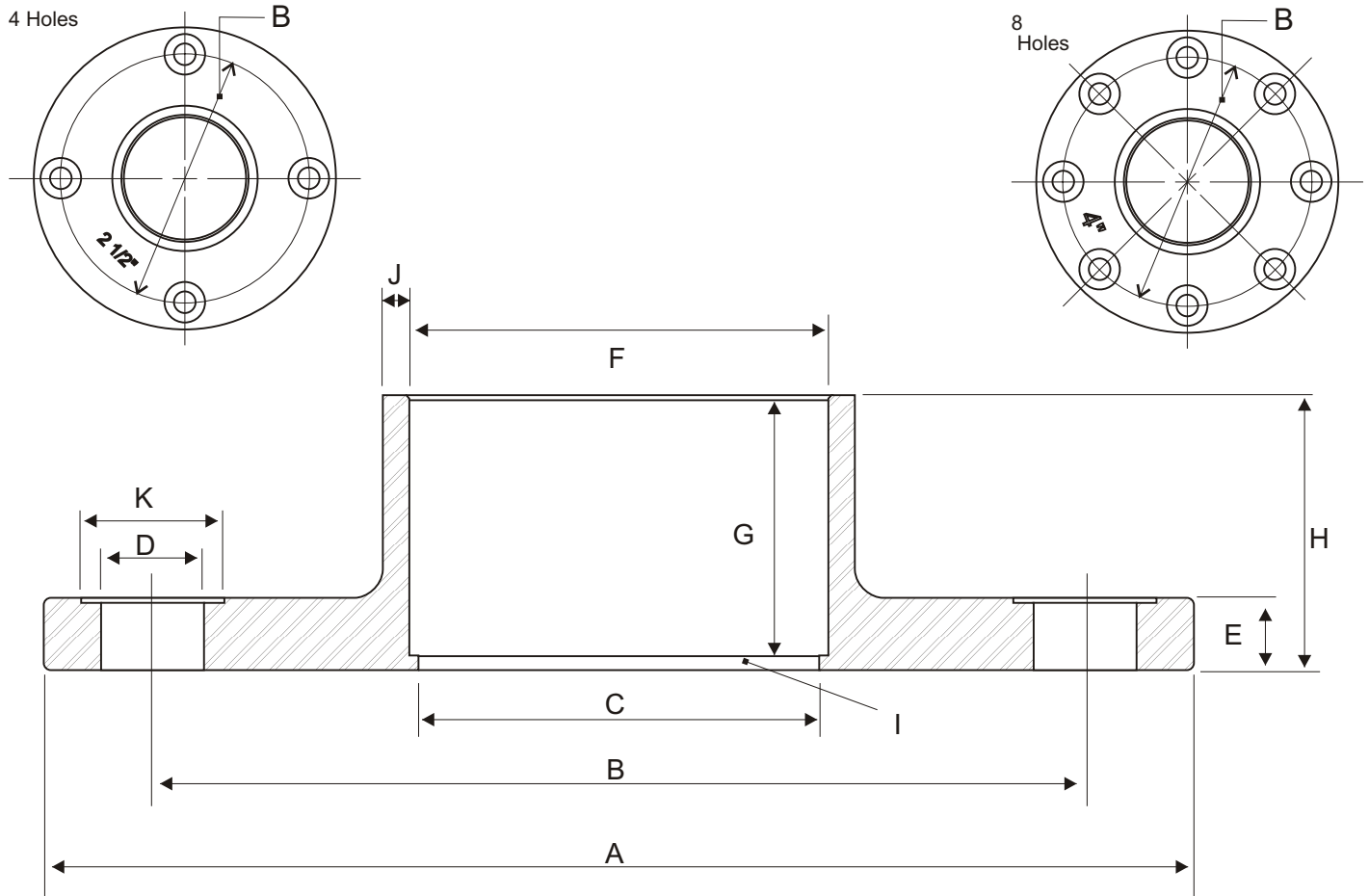
CxM CAST ADAPTERS				
BMI#	SIZE	L	H	kg
25804	1/2	25.0	29.3	0.040
25805	3/4	30.6	36.0	0.060
25806	1	46.0	46.0	0.100
25807	1 1/4	46.0	50.0	0.183
25808	1 1/2	51.5	54.0	0.200
25809	2	65.2	63.5	0.333



CxC CAST DRAIN COUPLINGS				
BMI#	SIZE	L	H	kg
25084	1/2	33.8	37.7	0.030



# COPPER ALLOY CAST PRESSURE FITTING



**Bronze Alloy:**  
**Leaded = C83600**  
**Lead Free = C89844**

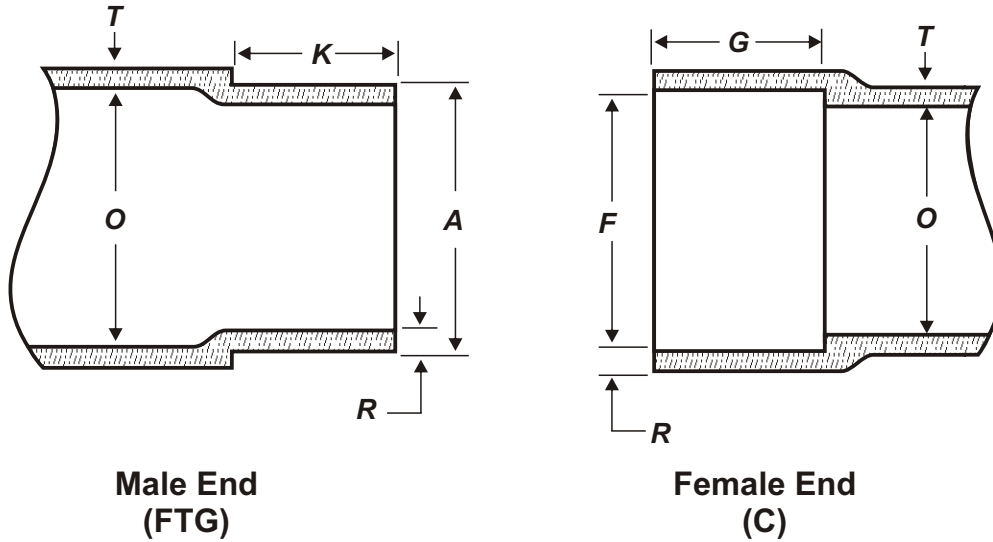
## #125 Bronze Companion Flanges

Reg Bronze BMI#	Lead Free Bronze BMI#	Size	Holes	A	B	C	D	E	F		G	H	I	J	K
									Min. - Max.						
21606	25606	1"	4	108.0	79.2	26.0	15.9	4.9	28.7 - 28.8		23.0	26.9	3.9	1.8	28
21607	25607	1 1/4"	4	117.5	88.9	32.0	15.9	4.9	35.0 - 35.1		24.5	28.4	3.9	1.8	28
21608	25608	1 1/2"	4	127.0	98.4	38.1	15.9	6.4	41.4 - 41.5		28.0	31.5	3.5	2.1	28
21609	25609	2"	4	152.4	120.7	50.3	19.1	7.9	54.1 - 54.2		34.0	37.8	3.8	2.3	34
21610	25610	2 1/2"	4	177.8	139.7	62.5	19.1	7.9	66.8 - 66.9		37.5	41.3	3.8	2.6	34
21611	25611	3"	4	190.5	152.4	74.7	19.1	9.7	79.5 - 79.6		42.0	47.0	5.0	2.8	34
21612	25612	4"	8	228.6	190.5	99.1	19.1	9.7	104.9 - 105.0		55.0	59.6	4.6	3.3	34

## #150 Bronze Companion Flanges

Reg Bronze BMI#	Lead Free Bronze BMI#	Size	Holes	A	B	C	D	E	F		G	H	I	J	K
									Min. - Max.						
21638	25638	1 1/2"	4	127.0	98.4	38.1	15.9	11.2	41.4 - 41.5		30.8	33.9	3.1	2.1	28
21639	25639	2"	4	152.4	120.7	50.3	19.1	12.7	54.1 - 54.2		34.0	37.1	3.1	2.3	34
21640	25640	2 1/2"	4	177.8	139.7	62.5	19.1	14.2	66.8 - 66.9		37.5	40.6	3.1	2.6	34
21641	25641	3"	4	190.5	152.4	74.7	19.1	15.8	79.5 - 79.6		42.2	45.3	3.1	2.8	34
21642	25642	4"	8	228.6	190.5	99.1	19.1	17.5	104.9 - 105.0		55.0	58.1	3.1	3.3	34

# COPPER ALLOY CAST PRESSURE FITTING



**Male End  
(FTG)**

**Female End  
(C)**

Standard water tube size	Male End			Female End			Wall Thickness		Inside Diam. of Fitting 'O'
	Outside Diameter 'A'		Length 'K'	Inside Diameter 'F'		Depth 'G'	Body 'T'	Joint 'R'	
	Min.	Max.	Min.	Min.	Max.	Min.			
1/4	9.47	9.55	9.65	9.58	9.68	7.87	2.03	1.27	7.87
3/8	12.62	12.73	11.18	12.75	12.85	9.65	2.29	1.27	10.92
1/2	15.80	15.90	14.22	15.93	16.03	12.70	2.29	1.27	13.72
3/4	22.15	22.25	20.57	22.28	22.38	19.05	2.54	1.52	19.81
1	28.50	28.63	23.11	28.65	28.75	23.11	2.79	1.78	25.91
1 1/4	34.85	34.98	26.16	35.00	35.13	24.64	3.05	1.78	32.00
1 1/2	41.17	41.33	29.46	41.35	41.48	27.69	3.30	2.03	38.10
2	53.87	54.03	35.81	54.05	54.18	34.04	3.81	2.29	50.29
2 1/2	66.57	66.73	38.86	66.75	66.88	37.34	4.32	2.54	62.48
3	79.27	79.43	43.69	79.45	79.58	42.16	4.83	2.79	74.68
4	104.67	104.83	56.39	104.85	104.98	54.86	5.59	3.30	99.06
6	155.47	155.63	81.79	155.65	155.78	78.49	8.64	5.08	148.34

Dimensions in mm

Comply with:

Materials: ASME/ASTM B584  
Alloy C89844

Dimensions: ASME/ASTM B16.18 - 2012

Threads: MSS SP-106 - 2003 (Flanges)

Drinking water: ASME/ASTM B1.20.1 - 2013

Other: NSF/ANSI STANDARD

61 - 372 (Lead free)

TEMPERATURE - PRESSURE RATINGS (psi) OF SOLDER JOINTS					
ALLOYS USED FOR JOINTS	SERVICE TEMPERATURE °F / °C	STANDARD TUBE SIZE, TYPES K, L AND M			
		WATER AND NON-CORROSIVE LIQUIDS & GASES			
		1/4"~1"	1 1/4"~2"	2 1/2"~4"	5"~8"
50% Tin / 50% Lead Solder Joints (Not to be used in potable water systems)	100 / 38	200	175	150	135
	150 / 66	150	125	100	90
	200 / 93	100	90	75	70
	250 / 121	85	75	50	45
95% Tin / 5% Antimony Solder	100 / 38	1090	850	705	660
	150 / 66	625	485	405	375
	200 / 93	505	395	325	305
	250 / 121	270	210	175	165
Alloy E Solder	100 / 38	710	555	460	430
	150 / 66	475	370	305	285
	200 / 93	375	290	240	225
	250 / 121	320	250	205	195
Alloy HB Solder	100 / 38	1035	805	670	625
	150 / 66	710	555	460	430
	200 / 93	440	345	285	265
	250 / 121	430	335	275	260

Note: Ratings are those given in ASME B 16.18 "Wrought Copper and Copper Alloy Solder Joint Pressure Fittings." (a) Solder alloys are covered by ASTM Standard Specification B32. The Safe Drinking Water Act Amendment of 1986 prohibits the use of any solder having a lead content in excess of 0.2% for potable water systems.

