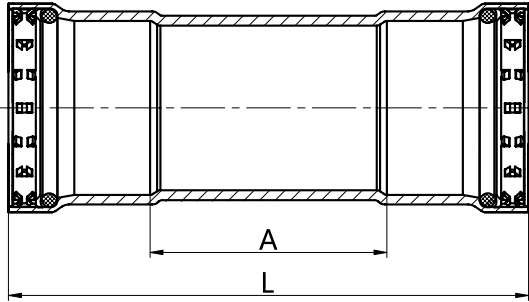


# TECHNICAL INFORMATION

## BMI CARBON PRESS FITTINGS



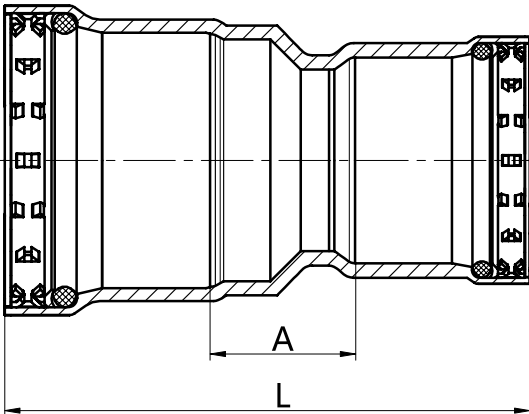
# BMI CARBON PRESS FITTINGS



## Couplings with Stop

BMI#	SIZE	A (inch)	L (inch)	lb
45004	1/2	0.559	2.701	0.231
45005	3/4	0.630	2.941	0.309
45006	1	0.591	3.291	0.434
45007	1 1/4	0.701	4.339	0.714
45008	1 1/2	0.890	4.630	0.923
45009	2	0.772	4.752	1.155

45010	2 1/2	1.319	4.921	1.719
45011	3	1.382	5.980	2.424
45012	4	1.571	7.870	3.967

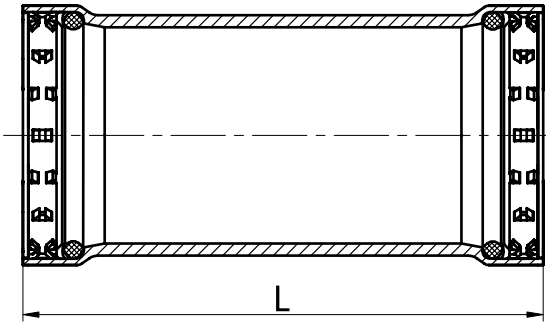


## Reducing Couplings

BMI#	SIZE	A (inch)	L (inch)	lb
45023	3/4 x 1/2	1.201	3.429	0.249
45027	1 x 3/4	1.240	3.740	0.355
45028	1 x 1/2	1.370	3.791	0.324
45031	1 1/4 x 1	1.228	4.390	0.542
45032	1 1/4 x 3/4	1.402	4.370	0.522
45035	1 1/2 x 1 1/4	1.209	4.902	0.756
45036	1 1/2 x 1	0.886	4.626	0.727
45037	1 1/2 x 3/4	1.555	4.626	0.683
45040	2 x 1 1/2	1.429	5.260	1.036
45041	2 x 1 1/4	1.449	5.272	0.910
45042	2 x 1	1.555	4.941	0.882

45046	2 1/2 x 2	2.969	4.961	1.543
45047	2 1/2 x 1 1/2	3.299	5.189	1.455
45048	2 1/2 x 1 1/4	3.370	5.189	1.344
45049	2 1/2 x 1	3.488	4.831	1.212
45051	3 x 2 1/2	3.752	5.551	2.006
45052	3 x 2	3.760	5.752	1.984
45053	3 x 1 1/2	4.079	5.949	1.917
45054	3 x 1 1/4	4.161	5.980	1.807
45056	4 x 3	5.031	7.331	3.526
45057	4 x 2 1/2	5.272	7.059	3.086
45058	4 x 2	5.280	7.272	3.130
45059	4 x 1 1/2	5.598	7.469	2.975

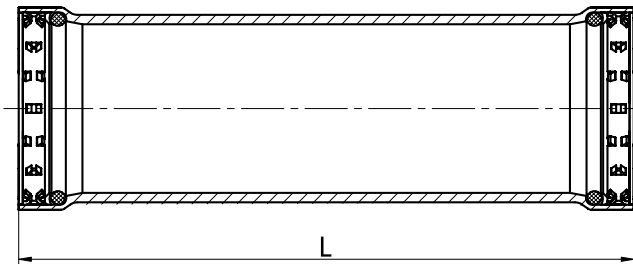
# BMI CARBON PRESS FITTINGS



## No Stop Couplings

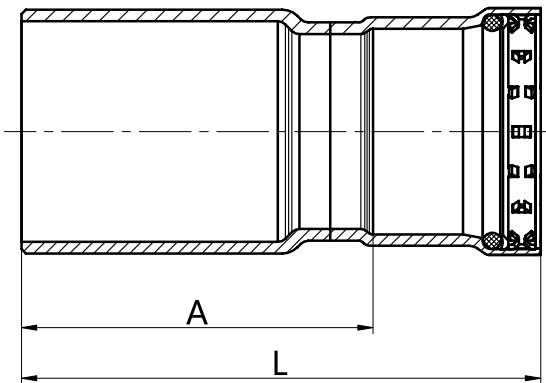
BMI#	SIZE	L (inch)	lb
45074	1/2	2.709	0.238
45075	3/4	2.941	0.311
45076	1	3.291	0.434
45077	1 1/4	4.339	0.716
45078	1 1/2	4.630	0.926
45079	2	4.740	1.159

45010	2 1/2	4.921	1.719
45011	3	5.980	2.424
45012	4	7.909	3.967



## Long Repair Couplings

BMI#	SIZE	L (inch)	lb
45084	1/2	3.819	0.339
45085	3/4	4.000	0.434
45086	1	4.382	0.591
45087	1 1/4	5.331	0.893
45088	1 1/2	5.441	1.100
45089	2	5.630	1.389

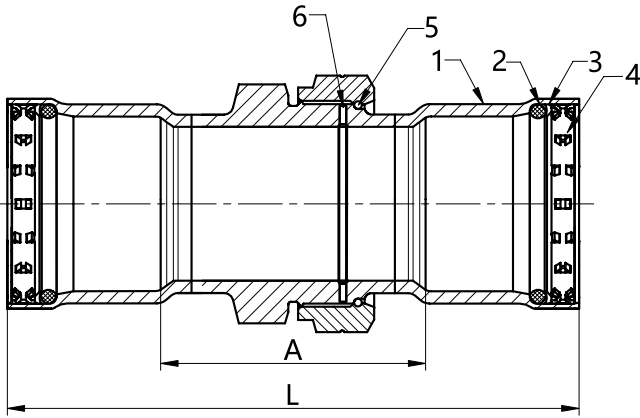


## FTG x P Bushings

BMI#	SIZE	A (inch)	L (inch)	lb
45123	3/4 x 1/2	1.780	2.850	0.326
45127	1 x 3/4	2.091	3.240	0.445
45128	1 x 1/2	2.142	3.209	0.419
45131	1 1/4 x 1	2.630	3.980	0.657
45132	1 1/4 x 3/4	2.811	3.969	0.633
45135	1 1/2 x 1 1/4	2.701	4.520	0.890
45136	1 1/2 x 1	2.811	4.161	0.628
45137	1 1/2 x 3/4	2.980	4.130	0.566
45140	2 x 1 1/2	2.961	4.831	1.170
45141	2 x 1 1/4	3.020	4.831	1.080
45142	2 x 1	3.142	4.488	0.796

45146	2 1/2 x 2	2.969	4.961	1.543
45147	2 1/2 x 1 1/2	3.299	5.169	1.455
45148	2 1/2 x 1 1/4	3.370	5.189	1.344
45149	2 1/2 x 1	3.488	4.831	1.212
45151	3 x 2 1/2	3.752	5.551	2.006
45152	3 x 2	3.760	5.752	1.984
45153	3 x 1 1/2	4.079	5.949	1.917
45154	3 x 1 1/4	4.161	5.980	1.807
45156	4 x 3	5.031	7.331	3.526
45157	4 x 2 1/2	5.272	7.059	3.086
45158	4 x 2	5.280	7.272	3.130
45159	4 x 1 1/2	5.598	7.469	2.975

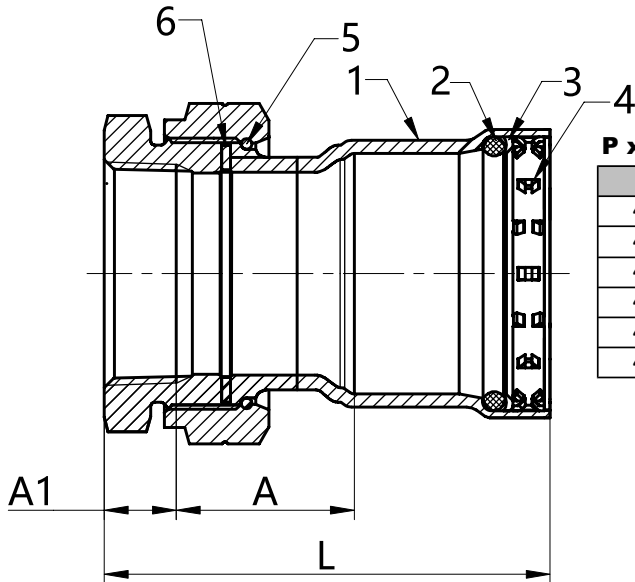
# BMI CARBON PRESS FITTINGS



## Unions

BMI#	SIZE	A (inch)	L (inch)	lb
45104	1/2	2.350	4.500	0.652
45105	3/4	2.669	4.988	1.034
45106	1	2.650	5.339	1.362
45107	1 1/4	2.839	6.480	1.838
45108	1 1/2	2.890	6.630	2.180
45109	2	3.921	7.890	3.654

#	Parts	Materials
1	Union PxP	Steel
2	O-Ring	EPDM
3	Washer	Cu C12200
4	Grip Ring	S.S. 420
5	Lock Ring	S.S. 304
6	Washer	EPDM

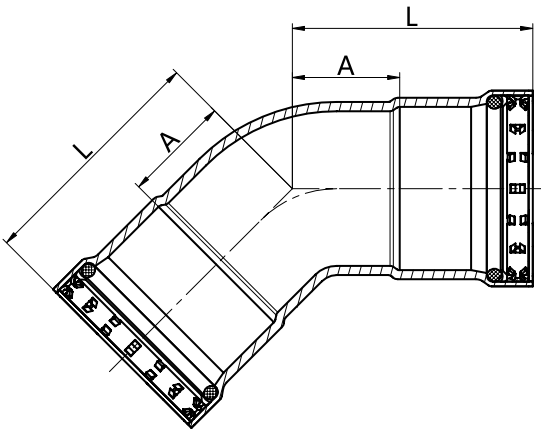


## P x FIPS Unions

BMI#	SIZE	A (inch)	A1 (inch)	L (inch)	lb
45614	1/2	1.252	0.539	2.850	0.549
45615	3/4	1.480	0.559	3.201	0.890
45616	1	1.370	0.661	3.382	1.225
45617	1 1/4	1.531	0.681	4.031	1.505
45618	1 1/2	1.551	0.681	4.098	1.724
45619	2	2.331	0.701	5.000	3.293

#	Parts	Materials
1	Body	Steel
2	O-Ring	EPDM
3	Washer	Cu C12200
4	Grip Ring	S.S. 420
5	Lock Ring	S.S. 304
6	Washer	EPDM

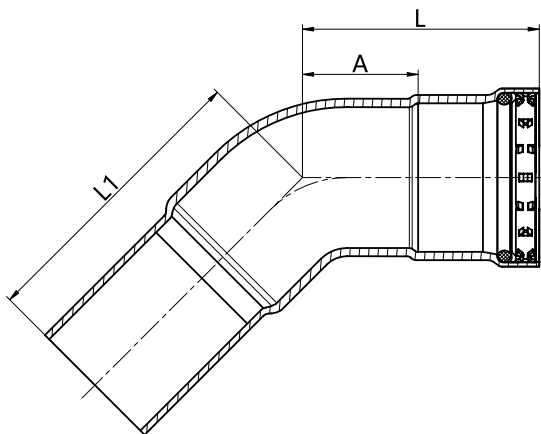
# BMI CARBON PRESS FITTINGS



## Elbows 45°

BMI#	SIZE	A (inch)	L (inch)	lb
45204	1/2	0.598	1.669	0.282
45205	3/4	0.709	1.870	0.386
45206	1	0.858	2.201	0.571
45207	1 1/4	0.980	2.799	0.904
45208	1 1/2	1.118	2.988	1.170
45209	2	1.319	3.311	1.589

45210	2 1/2	2.098	3.902	2.491
45211	3	2.260	4.559	3.460
45212	4	2.752	5.921	5.686

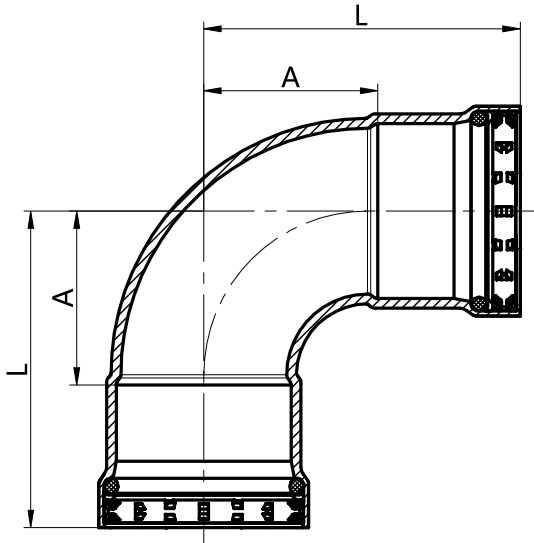


## FTG x P Elbows 45°

BMI#	SIZE	A (inch)	L (inch)	L1 (inch)	lb
45254	1/2	0.598	1.669	1.969	0.289
45255	3/4	0.709	1.870	2.130	0.395
45256	1	0.858	2.201	2.520	0.588
45257	1 1/4	0.980	2.799	2.988	0.899
45258	1 1/2	1.118	2.988	3.071	1.157
45259	2	1.319	3.311	3.579	1.649

45260	2 1/2	2.098	3.902	3.949	2.380
45261	3	2.260	4.559	4.339	3.262
45262	4	2.752	5.921	5.618	5.356

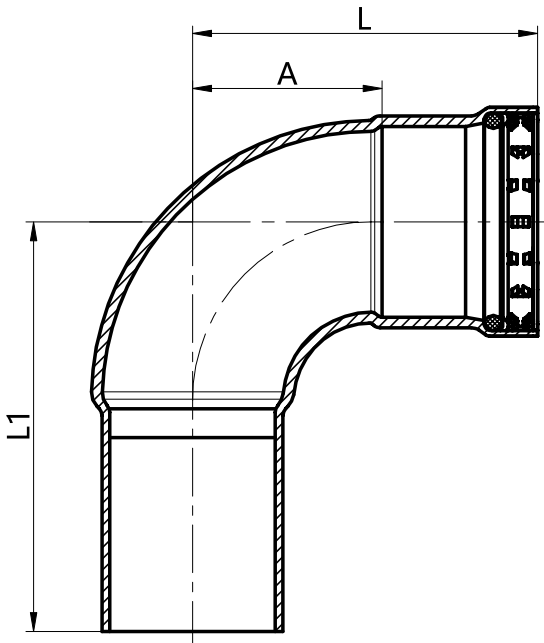
# BMI CARBON PRESS FITTINGS



## Elbows 90°

BMI#	SIZE	A (inch)	L (inch)	lb
45304	1/2	1.169	2.240	0.348
45305	3/4	1.358	2.520	0.474
45306	1	1.720	3.071	0.725
45307	1 1/4	2.000	3.819	1.122
45308	1 1/2	2.260	4.130	1.468
45309	2	2.799	4.780	2.087

45310	2 1/2	4.150	5.941	3.306
45311	3	4.760	7.091	4.672
45312	4	6.000	9.169	7.604

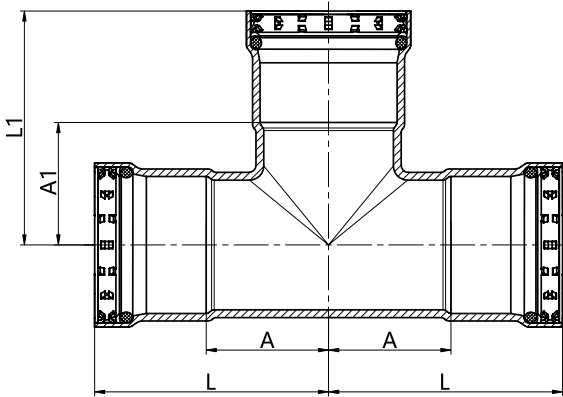


## FTG x P Elbows 90°

BMI#	SIZE	A1 (inch)	A (inch)	L1 (inch)	lb
45354	1/2	1.169	2.240	2.559	0.355
45355	3/4	1.358	2.520	2.870	0.489
45356	1	1.720	3.071	3.390	0.743
45357	1 1/4	2.000	3.819	4.039	1.455
45358	1 1/2	2.260	4.130	4.209	2.144
45359	2	2.799	4.780	5.079	1.120

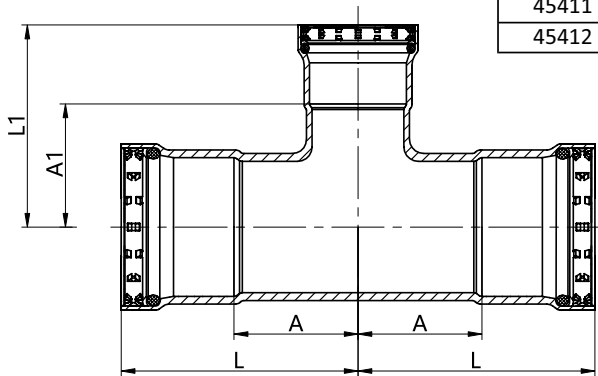
45360	2 1/2	4.150	5.941	6.059	3.240
45361	3	4.760	7.091	6.811	4.430
45362	4	6.000	9.169	8.780	7.185

# BMI CARBON PRESS FITTINGS



## Tees

BMI#	SIZE	A (inch)	L (inch)	A1 (inch)	L1 (inch)	lb
45404	1/2	0.969	2.039	0.929	2.000	0.476
45405	3/4	1.110	2.260	1.091	2.240	0.637
45406	1	1.228	2.571	1.228	2.571	0.899
45407	1 1/4	1.409	3.228	1.382	3.201	1.404
45408	1 1/2	1.571	3.441	1.539	3.409	1.796
45409	2	1.811	3.799	1.799	3.791	2.413

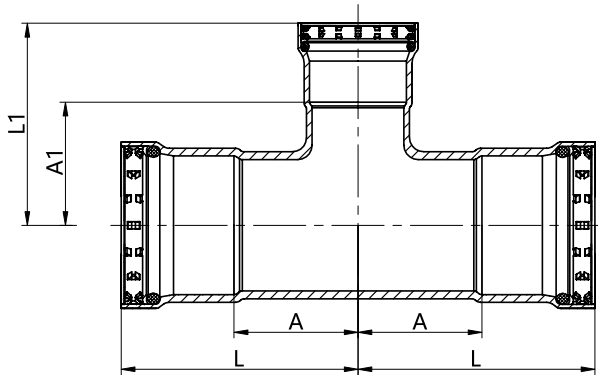


45410	2 1/2	2.161	3.961	2.260	4.059	3.372
45411	3	2.551	4.882	2.520	4.819	4.805
45412	4	3.220	6.402	3.079	6.260	8.001

## Reducing Tees

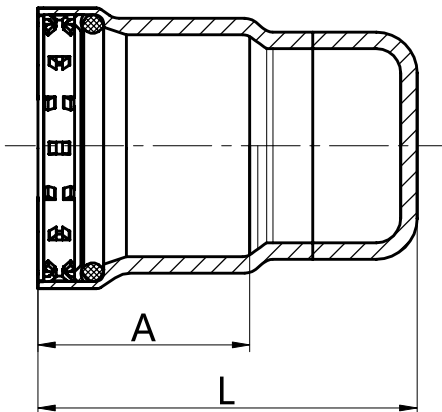
BMI#	SIZE	A (inch)	A1 (inch)	L (inch)	L1 (inch)	lb
45429	3/4 x 3/4 x 1/2	1.110	1.071	2.260	2.142	0.595
45438	1 x 1 x 3/4	1.228	1.240	2.571	2.402	0.838
45439	1 x 1 x 1/2	1.228	1.201	2.571	2.280	0.798
45453	1 1/4 x 1 1/4 x 1	1.409	1.382	3.228	2.728	1.274
45454	1 1/4 x 1 1/4 x 3/4	1.409	1.390	3.228	2.551	1.212
45455	1 1/4 x 1 1/4 x 1/2	1.409	1.350	3.228	2.421	1.170
45471	1 1/2 x 1 1/2 x 1 1/4	1.571	1.500	3.441	3.319	1.706
45472	1 1/2 x 1 1/2 x 1	1.571	1.480	3.441	2.831	1.578
45473	1 1/2 x 1 1/2 x 3/4	1.571	1.480	3.441	2.642	1.516
45474	1 1/2 x 1 1/2 x 1/2	1.571	1.441	3.441	2.512	1.479
45491	2 x 2 x 1 1/2	1.811	1.839	3.799	3.709	2.303
45495	2 x 2 x 1 1/4	1.811	1.780	3.799	3.598	2.202
45496	2 x 2 x 1	1.811	1.752	3.799	3.098	2.074
45497	2 x 2 x 3/4	1.811	1.799	3.799	2.949	2.019
45498	2 x 2 x 1/2	1.811	1.740	3.799	2.811	1.979

# BMI CARBON PRESS FITTINGS



## Reducing Tees

BMI#	SIZE	A (inch)	A1 (inch)	L (inch)	L1 (inch)	lb
45534	2 1/2 x 2 1/2 x 2	2.161	2.051	3.961	4.039	3.240
45535	2 1/2 x 2 1/2 x 1 1/2	1.720	2.079	3.520	3.949	2.821
45536	2 1/2 x 2 1/2 x 1 1/4	1.720	2.059	3.520	3.870	2.733
45537	2 1/2 x 2 1/2 x 1	1.350	2.039	3.150	3.382	2.358
45549	3 x 3 x 2 1/2	2.319	2.512	4.630	4.311	4.254
45550	3 x 3 x 2	2.110	2.299	4.409	4.291	4.077
45551	3 x 3 x 1 1/2	1.799	2.331	4.130	4.201	3.747
45552	3 x 3 x 1 1/4	1.701	2.311	4.039	4.130	3.570
45570	4 x 4 x 3	2.661	3.130	5.811	5.429	6.722
45571	4 x 4 x 2 1/2	2.402	3.079	5.551	4.882	6.325
45572	4 x 4 x 2	2.181	2.870	5.350	4.858	5.951
45573	4 x 4 x 1 1/2	1.858	2.902	5.039	4.772	5.532



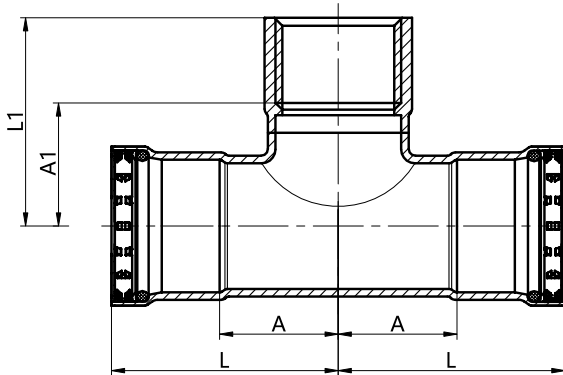
## Caps

BMI#	SIZE	A (inch)	L (inch)	lb
45504	1/2	1.071	2.142	0.192
45505	3/4	1.161	2.260	0.253
45506	1	1.350	2.429	0.350
45507	1 1/4	1.819	2.929	0.531
45508	1 1/2	1.870	3.020	0.672
45509	2	1.988	3.110	0.875

45510	2 1/2	1.799	3.272	1.300
45511	3	2.299	3.780	1.719
45512	4	3.181	4.650	2.755



# BMI CARBON PRESS FITTINGS



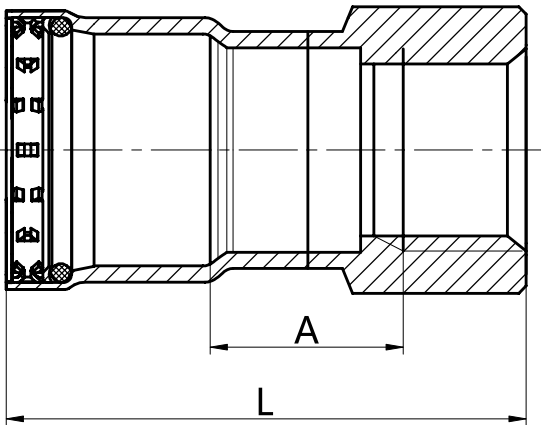
## P x P x FIPS Tees

BMI#	SIZE	A (inch)	A1 (inch)	L (inch)	L1 (inch)	lb
45630	3/4 x 3/4 x 3/4	1.110	1.031	2.260	1.579	0.624
45631	3/4 x 3/4 x 1/2	1.110	1.020	2.260	1.551	0.593
45640	1 x 1 x 3/4	1.228	1.181	2.571	1.728	0.824
45641	1 x 1 x 1/2	1.228	1.189	2.571	1.728	0.798
45650	1 1/4 x 1 1/4 x 1	1.409	1.370	3.228	2.031	1.327
45651	1 1/4 x 1 1/4 x 3/4	1.409	1.331	3.228	1.890	1.256
45652	1 1/4 x 1 1/4 x 1/2	1.409	1.311	3.228	1.850	1.168
45660	1 1/2 x 1 1/2 x 1 1/4	1.571	1.469	3.441	2.150	1.737
45661	1 1/2 x 1 1/2 x 1	1.571	1.571	3.441	2.240	1.655
45662	1 1/2 x 1 1/2 x 3/4	1.571	1.409	3.441	1.969	1.512
45663	1 1/2 x 1 1/2 x 1/2	1.571	1.421	3.441	1.949	1.477
45670	2 x 2 x 1 1/2	1.811	1.728	3.799	2.409	2.228
45671	2 x 2 x 1 1/4	1.811	1.772	3.799	2.449	2.237
45672	2 x 2 x 1	1.811	1.890	3.799	2.551	2.158
45673	2 x 2 x 3/4	1.811	1.720	3.799	2.280	2.012
45674	2 x 2 x 1/2	1.811	1.701	3.799	2.240	1.981

## P x P x FIPS Tees

BMI#	SIZE	A (inch)	A1 (inch)	L (inch)	L1 (inch)	lb
45685	2 1/2 x 2 1/2 x 3/4	1.350	2.000	3.150	2.551	2.248
45695	3 x 3 x 3/4	1.441	2.240	3.740	2.799	3.086
45696	4 x 4 x 3/4	1.551	2.760	4.720	3.311	4.496

# BMI CARBON PRESS FITTINGS

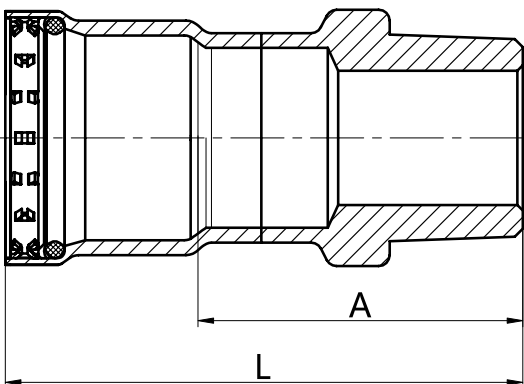


## P x FIPS Adapters

BMI#	SIZE	A (inch)	L (inch)	lb
45704	1/2	0.689	2.291	0.242
45705	3/4	0.740	2.449	0.315
45706	1	0.728	2.740	0.507
45707	1 1/4	0.772	3.272	0.758
45708	1 1/2	0.720	3.280	0.835
45709	2	0.760	3.441	1.250

45710	2 1/2	1.130	3.858	1.829
45711	3	1.169	4.488	2.358
45712	4	1.150	5.421	3.438

45723	3/4 x 1/2	0.728	2.429	0.284
45727	1 x 3/4	0.780	2.681	0.390
45728	1 x 1/2	1.031	2.909	0.386
45733	1 1/4 x 1	0.760	3.240	0.648
45734	1 1/4 x 3/4	1.110	3.480	0.575
45735	1 1/4 x 1/2	1.150	3.500	0.549
45736	1 1/2 x 1 1/4	0.858	3.409	0.857
45737	1 1/2 x 1	1.110	3.642	0.793
45738	1 1/2 x 3/4	1.272	3.701	0.703
45739	1 1/2 x 1/2	1.311	3.720	0.679
45740	2 x 1 1/2	1.031	3.701	1.029
45741	2 x 1 1/4	1.280	3.929	1.073
45742	2 x 1	1.350	4.000	0.976
45743	2 x 3/4	1.539	4.079	0.866
45744	2 x 1/2	1.559	4.059	0.831

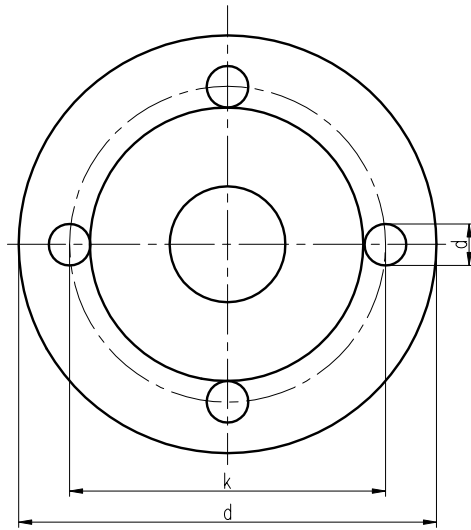
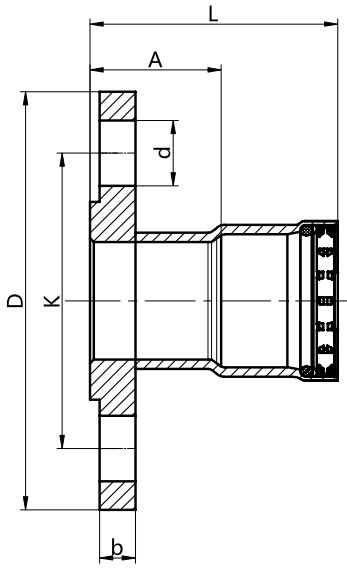


## P x MIPS Adapters

BMI#	SIZE	A (inch)	L (inch)	lb
45804	1/2	1.449	2.520	0.234
45805	3/4	1.500	2.661	0.328
45806	1	1.661	3.000	0.500
45807	1 1/4	1.902	3.701	0.730
45808	1 1/2	1.929	3.799	0.895
45809	2	1.929	3.921	1.170

45810	2 1/2	2.752	4.551	1.719
45811	3	2.890	5.201	2.336
45812	4	3.031	6.209	4.121

# BMI CARBON PRESS FITTINGS

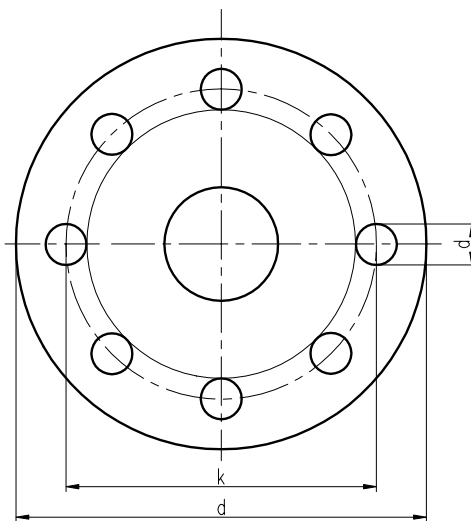
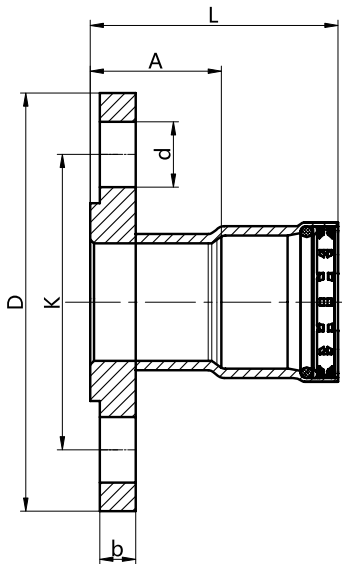


## Companion Flanges

BMI#	SIZE	A (inch)	L (inch)	b (inch)	k (inch)	D (inch)	d (inch)	lb
45604	1/2 x 3 1/4	1.512	2.579	0.461	2.358	3.539	0.630	1.069
45605	3/4 x 3 7/8	1.579	2.740	0.520	2.760	3.941	0.630	1.527
45606	1 x 4 1/4	1.752	3.098	0.579	3.110	4.331	0.630	2.094
45607	1 1/4 x 4 5/8	1.890	3.709	0.642	3.500	4.531	0.630	2.826
45608	1 1/2 x 5	2.059	3.929	0.701	3.858	4.921	0.630	3.645
45609	2 x 6	2.071	4.059	0.772	4.760	5.909	0.752	5.470

## Companion Flanges

BMI#	SIZE	A (inch)	L (inch)	b (inch)	k (inch)	D (inch)	d (inch)	lb
45610	2 1/2 x 7	1.539	3.331	0.890	5.512	7.091	0.752	8.419
45611	3 x 7 1/2	1.650	3.949	0.961	5.980	7.480	0.752	9.874



## Companion Flanges

BMI#	SIZE	A (inch)	L (inch)	b (inch)	k (inch)	D (inch)	d (inch)	lb
45612	4 x 9	1.630	4.799	0.961	7.520	9.059	0.752	13.863

# BMI CARBON PRESS FITTINGS

## Compatible references:

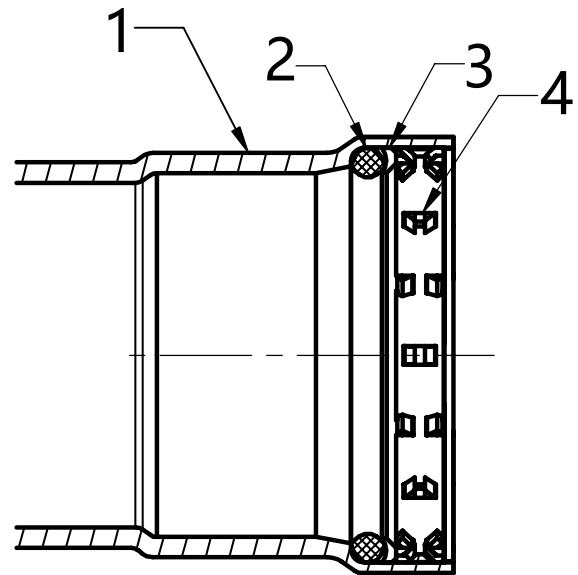
All pipes must comply with the ASTM A53, A106, A135, A795 standards sch. 10~40

## Operating information:

Working pressure: 200 psi Max.  
 Working temperature: -0 °F ~ 250 °F (-18 °C ~ 122 °C)  
 Vacuum: 29.2" Mercury @ 160 °F (71 °C)

100% Factory pressure tested

Zinc/Nickel coating for corrosion resistance



	Parts	Materials
1	Body	Carbon Steel
2	O-Ring	EPDM
3	Washer	Copper C12200
4	Grip Ring	S.S. 420

## Application and usages:

- Hydronic heating (w/ 50% glycol)
- Chilled water
- Compressed air (200 psi max.)
- Non-medical gases (140 psi max.)
- Water or dry fire sprinkler (175 psi max.)
- Low pressure steam (15 psi max.)

## Certified and complies with:

- ASTM F3226
- ANSI/CAN/Z1117-22
- UPC, UMC and National Plumbing Code
- ANSI/CAN/UL 213
- FM Class 1920
- CRN
- ISO9001. ISO14001



**360°  
 Pressed  
 Joint  
 Detection  
 Feature**

## Press Joint Detection Feature

BMI Carbon Press fittings are made with Pressed Joint Detection Feature, providing fast and easy identification of unpressed connections during the pressure testing process in any installation angle possible.

The design feature provides a path for liquids and/or gases from inside the system past the sealing element of an unpressed connection.

When pressed according to instructions, the Pressed Joint Detection Feature is neutralized, creating a leak proof, permanent connection.

Unpressed connections are located by pressurizing the system with air or water. When testing with water, the suggested pressure is 15 to 85 psi maximum. Tests with air can be dangerous; manufacturer recommends testing compressed air at ½ to 45 psi maximum.

Following a successful test, the system may be pressure tested up to 200 psi maximum with water or non-combustible gases depending on local code requirements.

## Warning:

To obtain the performance above, the installation instructions online must be followed.



## Warranty:

BMI Carbon Press products carry a 15-year limited warranty from the manufacturer against defects in material and workmanship.

bmicanada.com