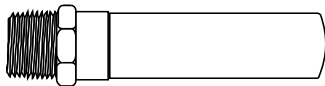


**BMI CANADA (REGULAR) WATER
HAMMER ARRESTERS PRICE LIST**

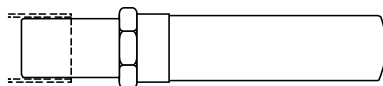
**WHA
17-1**

April 1, 2017 (b)

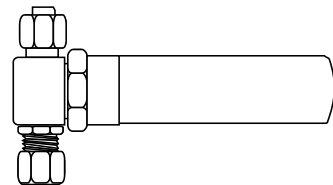
NOT SUITABLE FOR POTABLE WATER



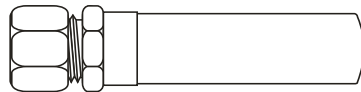
MIPS INLETS				
BMI#	Size	Packing	Barcode	\$
31905	3/4	1/180	777701319051	33.67



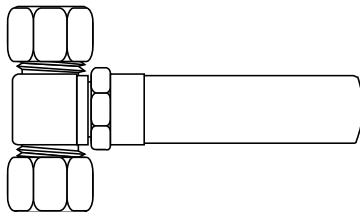
COP/FTG INLETS				
BMI#	Size	Packing	Barcode	\$
31914	1/2	1/180	777701319143	33.58
31915	3/4	1/160	777701319150	37.05



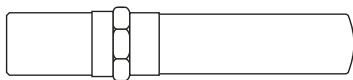
REV. NUT x COMPRESSION				
BMI#	Size	Packing	Barcode	\$
31963	3/8 O.D.	1/80	777701319631	46.69
31964	5/8 O.D.	1/80	777701319648	54.97



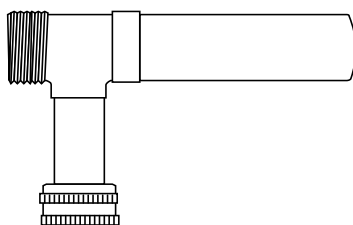
COMPRESSION				
BMI#	Size	Packing	Barcode	\$
31934	5/8 O.D.	1/160	777701319341	33.67



COMPRESSION TEES				
BMI#	Size	Packing	Barcode	\$
31942	1/4 O.D.	1/80	777701319426	46.69
31943	3/8 O.D.	1/80	777701319433	48.39
31944	5/8 O.D.	1/80	777701319440	51.68



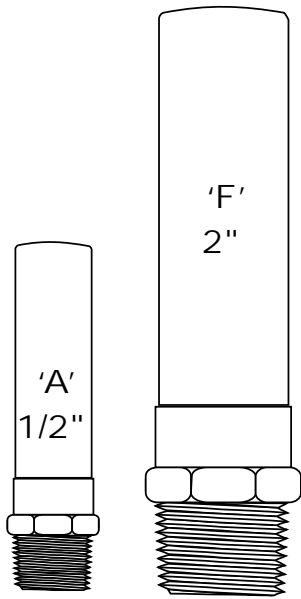
CPVC				
BMI#	Size	Packing	Barcode	\$
31954	1/2	1/160	777701319549	35.36



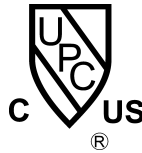
HOSE MALE x HOSE FEMALE				
BMI#	Size	Packing	Barcode	\$
31985	3/4	5/20	777701319853	54.97



COMMERCIAL TYPE



MIPS INLETS					
BMI#	Size	Packing	Type	Barcode	\$
31804	1/2	1/50	'A'	777701318047	64.02
31807	1 1/4	1/12	'D'	777701318078	262.53



NOT SUITABLE FOR POTABLE WATER