

**BMI CANADA T-TAPE & GENERAL SPECIALTIES PRICE LIST**

**TEF 18-1**

March 19, 2018

**WHITE T-TAPE**



| BMI#  | Size                                     | Packing  | Barcode      | \$   |
|-------|--|----------|--------------|------|
| 28000 | 1/2 x 480 x .003 x .5g / cm <sup>3</sup> | 100/1000 | 777701280009 | 1.24 |
| 28008 | 1 x 520 x .003 x .35g / cm <sup>3</sup>  | 25/250   | 777701280085 | 4.42 |

BLISTER PACKED PER QTY OF 10

**PINK T-TAPE (OIL & GAS)**



| BMI#  | Size                                       | Packing | Barcode      | \$    |
|-------|--|---------|--------------|-------|
| 28001 | 1/2 x 540 x .004 x 1.3g / cm <sup>3</sup>  | 50/500  | 777701280016 | 10.88 |
| 28002 | 3/4 x 540 x .004 x 1.3g / cm <sup>3</sup>  | 50/500  | 777701280023 | 16.12 |
| 28003 | 1/2 x 1296 x .004 x 1.3g / cm <sup>3</sup> | 50/300  | 777701280030 | 22.81 |

BLISTER PACKED PER QTY OF 10

\*\*\* SUITABLE FOR GASOLINE, PETROLEUM OILS, PROPANE, BUTANE, NAPHTHA, BENZENE, KEROSENE AND NATURAL GAS.

**YELLOW T-TAPE (OIL & GAS)**



| BMI#  | Size                                      | Packing | Barcode      | \$    |
|-------|---|---------|--------------|-------|
| 28009 | 1/2 x 540 x .004 x 1.3g / cm <sup>3</sup> | 50/500  | 777701280092 | 10.88 |
| 28010 | 3/4 x 540 x .004 x 1.3g / cm <sup>3</sup> | 50/500  | 777701280108 | 16.12 |

BLISTER PACKED PER QTY OF 10

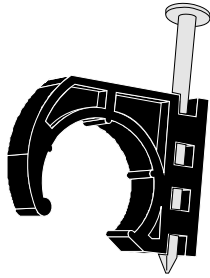
\*\*\* SUITABLE FOR GASOLINE, PETROLEUM OILS, PROPANE, BUTANE, NAPHTHA, BENZENE, KEROSENE AND NATURAL GAS.

**CABLE TIES**



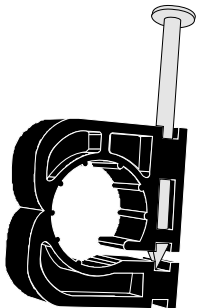
| BMI#                    | Size                 | Packing | Barcode      | \$    |
|-------------------------|----------------------|---------|--------------|-------|
| <b>WHITE CABLE TIES</b> |                      |         |              |       |
| 28404                   | 6" WHITE (100 PACK)  | 10/250  | 777701284045 | 4.07  |
| 28408                   | 8" WHITE (100 PACK)  | 10/150  | 777701284083 | 7.61  |
| 28410                   | 11" WHITE (100 PACK) | 10/100  | 777701284106 | 11.29 |
| 28418                   | 8" WHITE (1000 PACK) | 1/15    | 777701284182 | 75.90 |
| <b>BLACK CABLE TIES</b> |                      |         |              |       |
| 28604                   | 6" BLACK (100 PACK)  | 10/250  | 777701286049 | 4.07  |
| 28608                   | 8" BLACK (100 PACK)  | 10/120  | 777701286087 | 7.61  |
| 28610                   | 11" BLACK (100 PACK) | 10/100  | 777701286100 | 11.29 |
| 28618                   | 8" BLACK (1000 PACK) | 1/15    | 777701286186 | 75.90 |

**PLASTIC "J" CLIP WITH NAIL**



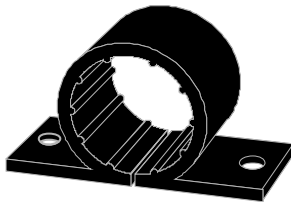
| BMI#  | Size | Packing  | Barcode      | \$   |
|-------|------|----------|--------------|------|
| 28304 | 1/2  | 100/1000 | 777701283048 | 0.16 |
| 28305 | 3/4  | 100/500  | 777701283055 | 0.26 |
| 28306 | 1    | 50/250   | 777701283062 | 0.36 |

**PLASTIC "D" CLIP WITH NAIL**



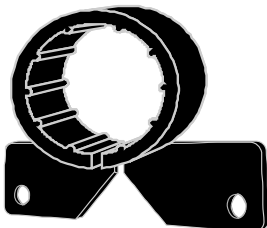
| BMI#  | Size | Packing  | Barcode      | \$   |
|-------|------|----------|--------------|------|
| 28314 | 1/2  | 100/4000 | 777701283147 | 0.21 |
| 28315 | 3/4  | 50/2000  | 777701283154 | 0.26 |

**PLASTIC "O" CLIP WITH EARS**



| BMI#  | Size | Packing | Barcode      | \$   |
|-------|------|---------|--------------|------|
| 28324 | 1/2  | 50/2400 | 777701283246 | 0.37 |
| 28325 | 3/4  | 50/1800 | 777701283253 | 0.41 |
| 28326 | 1    | 50/1000 | 777701283260 | 0.64 |

**PLASTIC "A" CLIP WITH EARS**



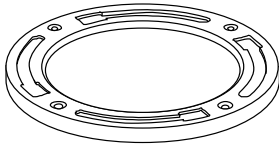
| BMI#  | Size | Packing | Barcode      | \$   |
|-------|------|---------|--------------|------|
| 28334 | 1/2  | 50/2400 | 777701283345 | 0.37 |
| 28335 | 3/4  | 50/1800 | 777701283352 | 0.41 |
| 28336 | 1    | 50/1000 | 777701283369 | 0.64 |

**PLASTIC 90° BEND SUPPORT WITH FLANGE**



| BMI#  | Size | Packing | Barcode      | \$   |
|-------|------|---------|--------------|------|
| 28154 | 1/2  | 20/500  | 777701281549 | 3.19 |

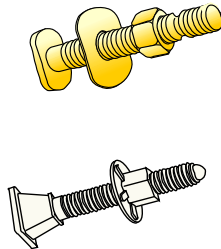
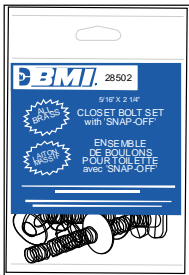
## BRASS CLOSET FLANGES



| BMI#  | Size          | Packing | Barcode      | \$    |
|-------|---------------|---------|--------------|-------|
| 28501 | LIGHT         | 1/50    | 777701285011 | 23.82 |
| 28504 | EXTRA HEAVY * | 1/25    | 777701285042 | 34.44 |

\*The extra heavy brass flange is specially designed for uneven floors like cement, ceramic, etc.

## SOLID BRASS & NYLON CLOSET BOLTS ASSEMBLY

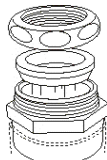


| BMI#           | Size                               | Packing | Barcode      | \$   |
|----------------|------------------------------------|---------|--------------|------|
| 28500          | 5/16" x 2 1/4" (60MM)              | 100/400 | 777701285004 | 4.24 |
| 28502          | 5/16" x 2 1/4" (60MM) - Set of 2   | 50/200  | 777701285028 | 9.56 |
| NYLON BOLT SET |                                    |         |              |      |
| 28506          | 5/16" x 2 1/2" (63.5MM) - Set of 2 | 50/500  | 777701285066 | 3.94 |

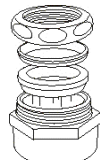
## BRASS MARVEL WASTE CONNECTORS



Type "A"



Type "B"



Type "C"

| BMI#  | Size                                 | Packing | Type | \$    |
|-------|--------------------------------------|---------|------|-------|
| 28638 | 1 1/2" Mips/COP x 1 1/2"/1 1/4" SLIP | 10/100  | A    | 20.09 |
| 28646 | FTG 1 1/2" x 1 1/4" SLIP             | 10/80   | B    | 32.15 |
| 28648 | 1 1/2" Fips x 1 1/2" or 1 1/4" SLIP  | 10/50   | C    | 30.57 |