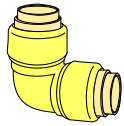


BMI CANADA (REGULAR) PUSH FIT FITTING PRICE LIST

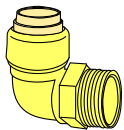
**PFT
10-3**

December 15, 2016 (c)

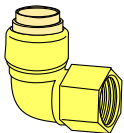
NOT SUITABLE FOR POTABLE WATER



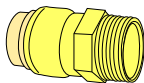
PUSH FIT 90° ELBOWS				
BMI#	Size	Packing	Barcode	\$
32306	1	2/60	777701323065	32.86
32323	3/4 x 1/2	5/100	777701323232	16.50



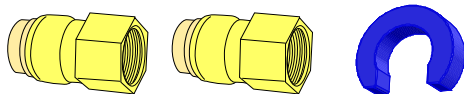
PUSH FIT x MIPS 90° ELBOWS				
BMI#	Size	Packing	Barcode	\$
32364	1/2	10/150	777701323645	11.00
32365	3/4	5/100	777701323652	16.00
32366	1	2/50	777701323669	22.00



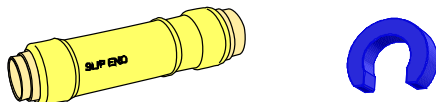
PUSH FIT x FIPS 90° ELBOWS				
BMI#	Size	Packing	Barcode	\$
32385	3/4	5/100	777701323850	15.50
32386	1	2/50	777701323867	21.00



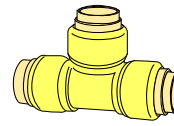
PUSH FIT x MIPS ADAPTERS				
BMI#	Size	Packing	Barcode	\$
32806	1	2/64	777701328060	21.24
32807	1 1/4	2/30	777701328077	77.00
32808	1 1/2	1/25	777701328084	105.00
32817	1/2 x 3/4	5/180	777701328176	12.10



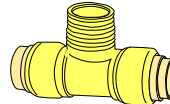
PUSH FIT x FIPS WATER HEATER KIT				
BMI#	Size	Packing	Barcode	\$
32724	1/2 x 3/4	1/1	777701327247	23.25
32725	3/4 x 3/4	1/1	777701327254	23.50



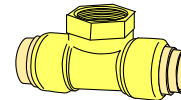
LONG REPAIR COUPLINGS				
BMI#	Size	Packing	Barcode	\$
32015	3/4	5/30	777701320156	35.74
32016	1	5/30	777701320163	57.25



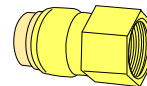
PUSH FIT TEES				
BMI#	Size	Packing	Barcode	\$
32405	3/4	5/60	777701324055	25.25
32406	1	2/30	777701324062	44.09
32419	1/2 x 1/2 X 1	2/40	777701324192	28.41
32420	1/2 x 1/2 X 3/4	5/60	777701324208	22.19
32430	3/4 x 1/2 x 3/4	5/60	777701324307	25.61
32431	3/4 x 1/2 x 1/2	5/60	777701324314	24.21
32438	1 x 1 x 3/4	2/30	777701324383	35.00



PUSH FIT x MIPS TEES				
BMI#	Size	Packing	Barcode	\$
32574	1/2	10/120	777701325748	15.78
32575	3/4	5/60	777701325755	28.73



PUSH FIT x FIPS TEES				
BMI#	Size	Packing	Barcode	\$
32591	1/2	10/100	777701325915	16.67
32592	3/4	5/50	777701325922	28.91

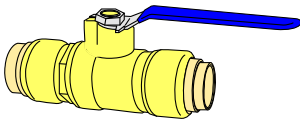


PUSH FIT x FIPS ADAPTERS				
BMI#	Size	Packing	Barcode	\$
32706	1	2/60	777701327063	19.49
32717	1/2 x 3/4	5/180	777701327179	11.57

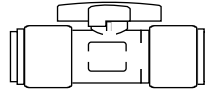


PUSH FIT CAPS				
BMI#	Size	Packing	Barcode	\$
32506	1	2/140	777701325069	17.17

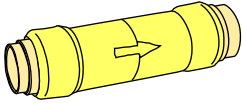
NOT SUITABLE FOR POTABLE WATER



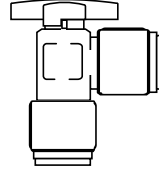
PUSH FIT BALL VALVES				
BMI#	Size	Packing	Barcode	\$
32606	1	2/30	777701326066	67.07



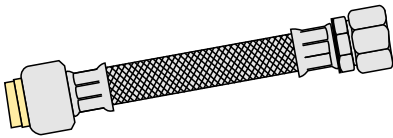
PUSH FIT CHROME PLATED STRAIGHT VALVE				
BMI#	Size	Packing	Barcode	\$
32904	1/2 x 1/2	10/100	777701329043	17.99



PUSH FIT CHECK VALVES				
BMI#	Size	Packing	Barcode	\$
32656	1	2/30	777701326561	50.97



PUSH FIT CHROME PLATED ANGLE VALVE				
BMI#	Size	Packing	Barcode	\$
32909	1/2 x 1/2	10/100	777701329098	18.56



PUSH FIT x FIPS BRAIDED FLEXIBLE TUBE				
BMI#	Size	Packing	Barcode	\$
32212	3/4 x 12"	5/25	777701322129	25.74
32215	3/4 x 15"	5/25	777701322150	27.16
32224	3/4 x 24"	5/25	777701322242	30.06